

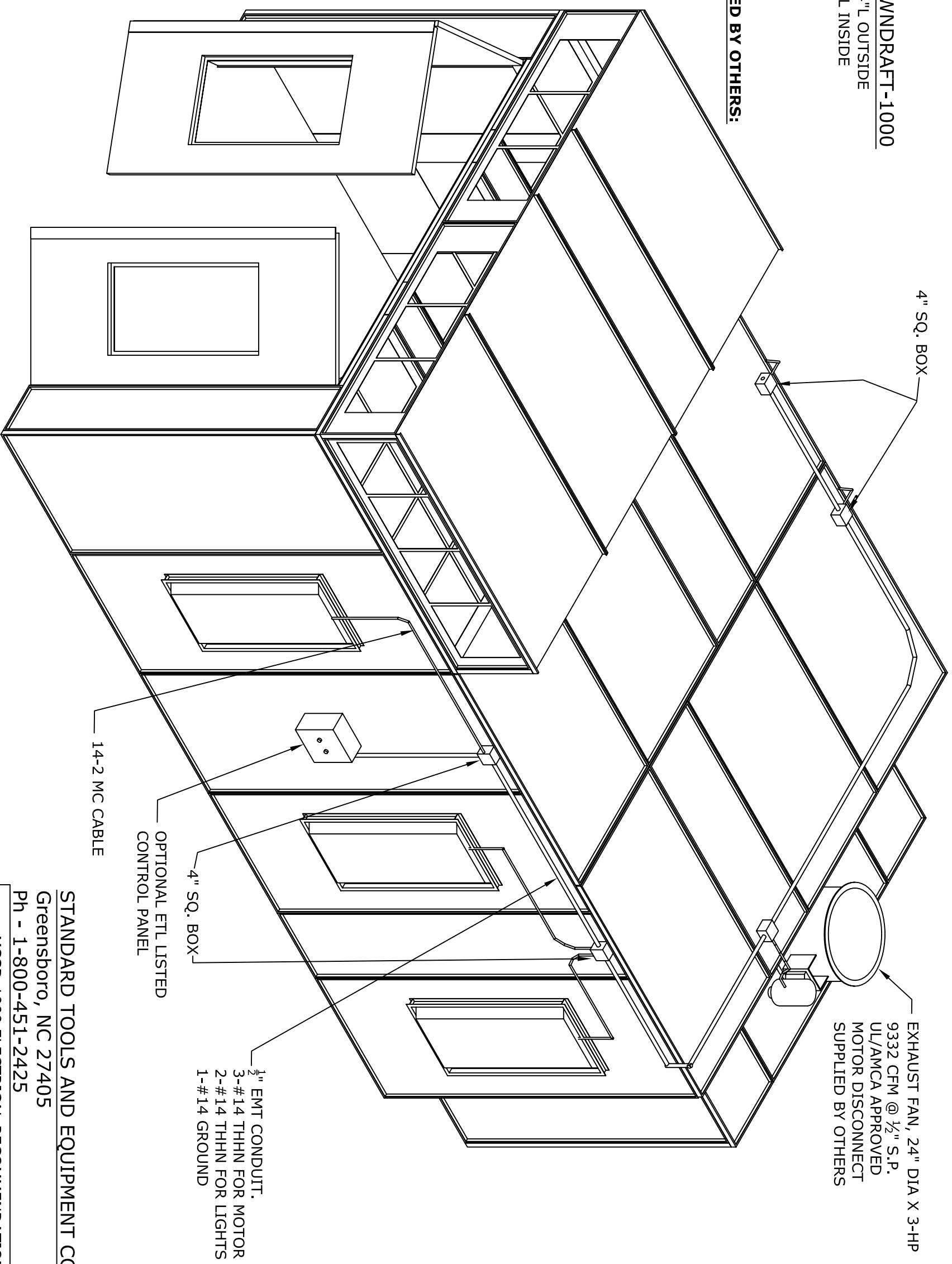
NOTE:  
 CONTRACTOR TO VERIFY ALL DIMENSIONS IN FIELD AND  
 REPORT ANY DISCREPANCIES TO ENGINEER PRIOR TO  
 STARTING WORK

MANUFACTURED IN COMPLIANCE WITH NFPA 33, OSHA,  
 AND NEC GUIDELINES

**MID-SIZE SEMI-DOWNDRAFT-1000**  
 13'-0"W x 10'-7"H x 23'-4"L OUTSIDE  
 12'-9"W x 8'-4"H x 20'-1"L INSIDE

**COMPONENTS PROVIDED BY OTHERS:**

- WIRING
- MC CABLE
- CONDUIT
- JUNCTION BOXES
- DISCONNECT



- NOTES:
- ALL MATERIALS OF CONSTRUCTION ARE NON-COMBUSTIBLE.
  - ALL PANELS ARE 18 GA. GALV SHEET STEEL.
  - WINDOWS ARE 1/4" TEMPERED GLASS.
  - LIGHT FIXTURES ARE ENCLOSED 2x4 FLORESCENT LAYIN TYPE, UL APPROVED, MOUNTED BEHIND GLASS WINDOW.
  - FAN IS TUBEAXIAL, ALUMINUM BLADE WITH DRIVE BELT IN ENCLOSED SHROUD, UL APPROVED.
  - ALL ELECTRICAL MORE THAN 3' FROM ANY BOOTH OPENING.

**STANDARD TOOLS AND EQUIPMENT CO.**  
 Greensboro, NC 27405  
 Ph - 1-800-451-2425

title	MSSD-1000 ELECTRICAL RECOMMENDATIONS	
part no	MSSD-1000	
order no	-	
drawn by	J.DEHART	date 3-12-13
file name	XXXX	rev A