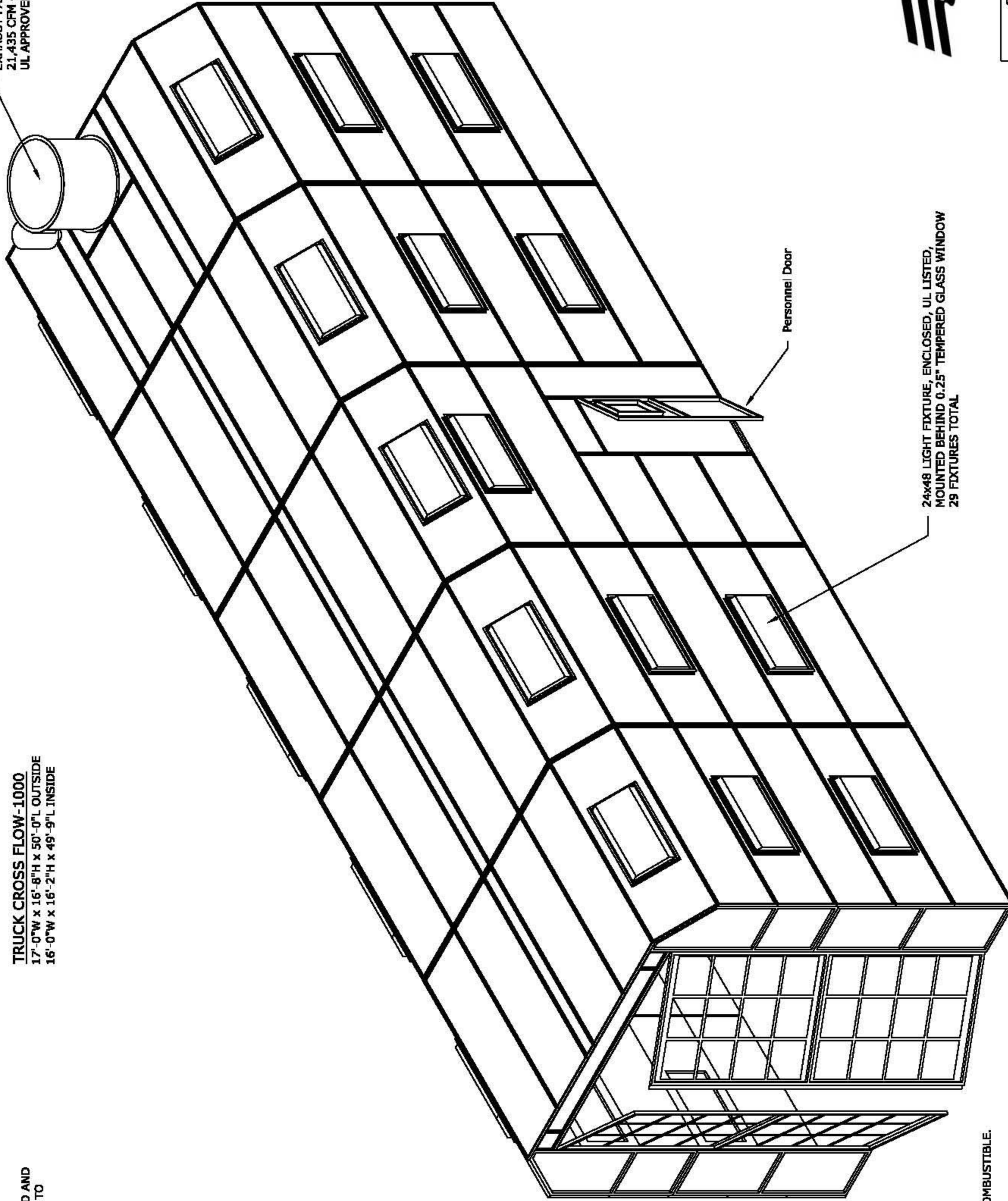


NOTE:
 CONTRACTOR TO VERIFY ALL DIMENSIONS IN FIELD AND
 REPORT ANY DISCREPANCIES TO ENGINEER PRIOR TO
 STARTING WORK

TRUCK CROSS FLOW-1000
 17'-0"W x 16'-8"H x 50'-0"L OUTSIDE
 16'-0"W x 16'-2"H x 49'-9"L INSIDE

EXHAUST FAN, 42" DIA, 5 HP,
 21,435 CFM @ 0.5" SP
 UL APPROVED



Personnel Door

24x48 LIGHT FIXTURE, ENCLOSED, UL LISTED,
 MOUNTED BEHIND 0.25" TEMPERED GLASS WINDOW
 29 FIXTURES TOTAL

NOTES:

- ALL MATERIALS OF CONSTRUCTION ARE NON-COMBUSTIBLE.
- ALL PANELS ARE 18 GA. GALV SHEET STEEL.
- WINDOWS ARE 1/4" TEMPERED GLASS.
- LIGHT FIXTURES ARE ENCLOSED 2x4 FLORESCENT LAYIN TYPE, UL APPROVED, MOUNTED BEHIND GLASS WINDOW.
- FAN IS TUBEAXIAL, ALUMINUM BLADE WITH DRIVE BELT IN ENCLOSED SHROUD, UL APPROVED.

MANUFACTURED IN COMPLIANCE WITH NFPA 33, OSHA, NEC,
 AND BOCA GUIDELINES



title	STCF-100050 SHEET 1 OF 3
part no	STCF-1000
order no	-
drawn by	MBOWLES
date	7-9-04
file name	XXXX
rev	A