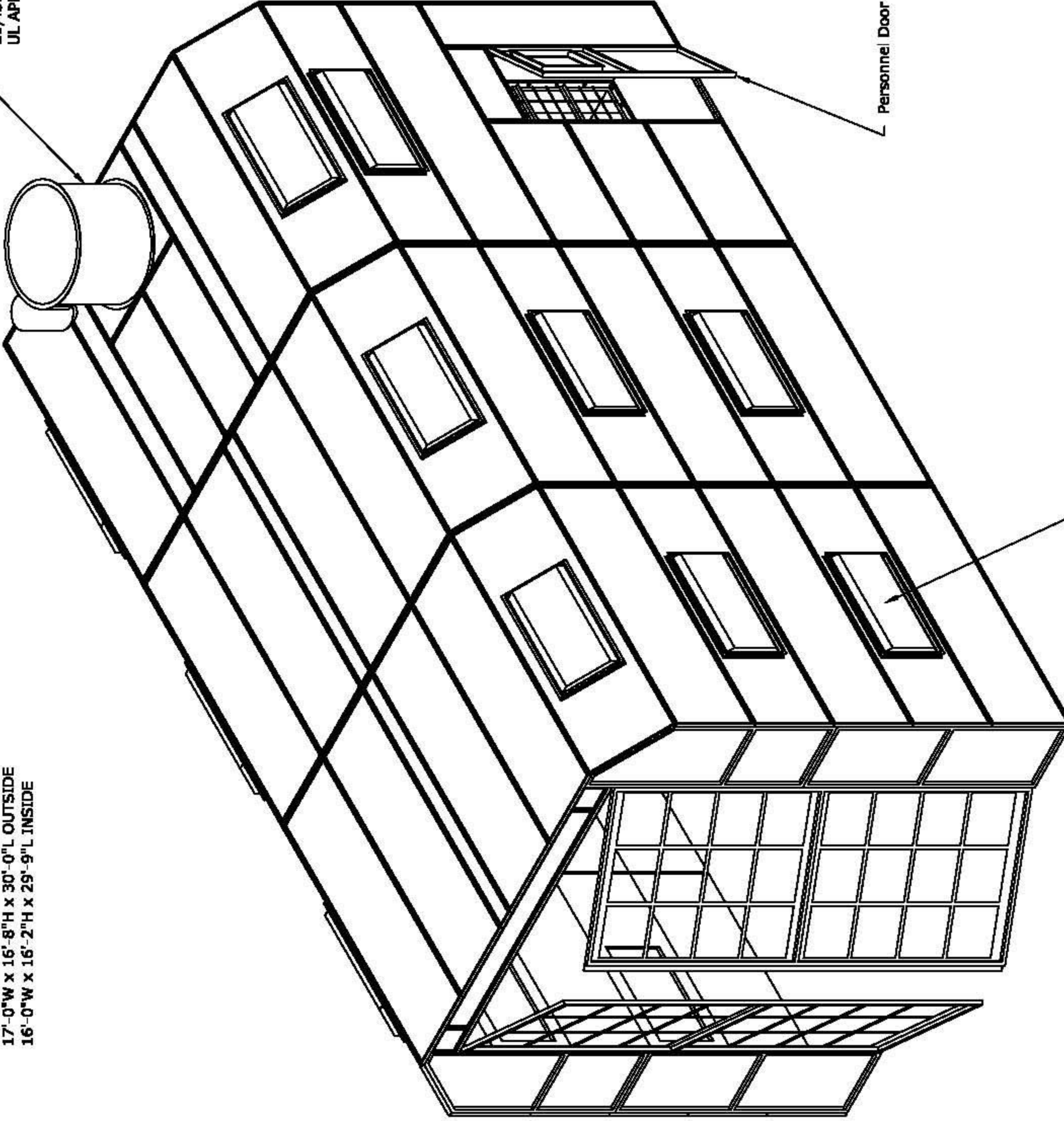


NOTE:
CONTRACTOR TO VERIFY ALL DIMENSIONS IN FIELD AND
REPORT ANY DISCREPANCIES TO ENGINEER PRIOR TO
STARTING WORK

TRUCK CROSS FLOW-1000
17'-0"W x 16'-8"H x 30'-0"L OUTSIDE
16'-0"W x 16'-2"H x 29'-9"L INSIDE

EXHAUST FAN, 42" DIA, 5 HP,
21,435 CFM @ 0.5" SP
UL APPROVED



24x48 LIGHT FIXTURE, ENCLOSED, UL LISTED,
MOUNTED BEHIND 0.25" TEMPERED GLASS WINDOW
17 FIXTURES TOTAL

NOTES:

- ALL MATERIALS OF CONSTRUCTION ARE NON-COMBUSTIBLE.
- ALL PANELS ARE 18 GA. GALV SHEET STEEL.
- WINDOWS ARE 1/4" TEMPERED GLASS.
- LIGHT FIXTURES ARE ENCLOSED 2x4 FLORESCENT LAYIN TYPE, UL APPROVED, MOUNTED BEHIND GLASS WINDOW.
- FAN IS TUBEXIAL, ALUMINUM BLADE WITH DRIVE BELT IN ENCLOSED SHROUD, UL APPROVED.

MANUFACTURED IN COMPLIANCE WITH NFPA 33, OSHA, NEC,
AND BOCA GUIDELINES



title	STCF-100030 SHEET 1 OF 3
part no	STCF-1000
order no	-
drawn by	
date	
file name	XXXX
rev	A