

ITEM	QTY	PART No.	DESCRIPTION
1	1	551094	PG1-70 ABC CYL. ASSEMBLY PKG.
2	1	550638	MB-U12 12 UNISTRUT TIE MOUNTING BRACKET
3	2	551654	PG1-17 ABC CYL. ASSEMBLY PKG.
4	2	550324	MB-U8 8 UNISTRUT TIE MOUNTING BRACKET
5	1	551200	MCH CONTROL HEAD
6	1	550853	MFG BRACKET, CONTROL HEAD
7	1	24751	BAC-612 BELL, 6, 120 VAC
8	4	550829	PDA-D2 PNEUMATIC ACTUATION
9	1	551511	PC VEHICLE BOOTH TIME DELAY
10	3	551650	NV-WA NOZZLE ASSEMBLY
11	2	551652	NV-P1 NOZZLE ASSEMBLY
12	2	551653	NV-DP2 NOZZLE ASSEMBLY
13	1	550104	PAC 10 PNEUMATIC ACTUATING CYLINDER

BILL OF MATERIALS

NOTE: BILL OF MATERIALS IS NOT ALL INCLUSIVE. DOES NOT INCLUDE FUSIBLE LINK, BRACKET ASSEMBLY, CORNER PULLEYS, WIRE PIPE, ETC.

MINIMUM OF 3 DETECTORS IN WORK AREA
MINIMUM OF 2 DETECTORS IN EACH PLENUM AND DUCT AREA.

FUSIBLE LINK LINE LIMITATIONS WHEN USED WITH MODEL MCH3 AND NMCH3 CONTROL HEADS AND PART NO. 415670 AND 423250 PULLEY ELBOWS.

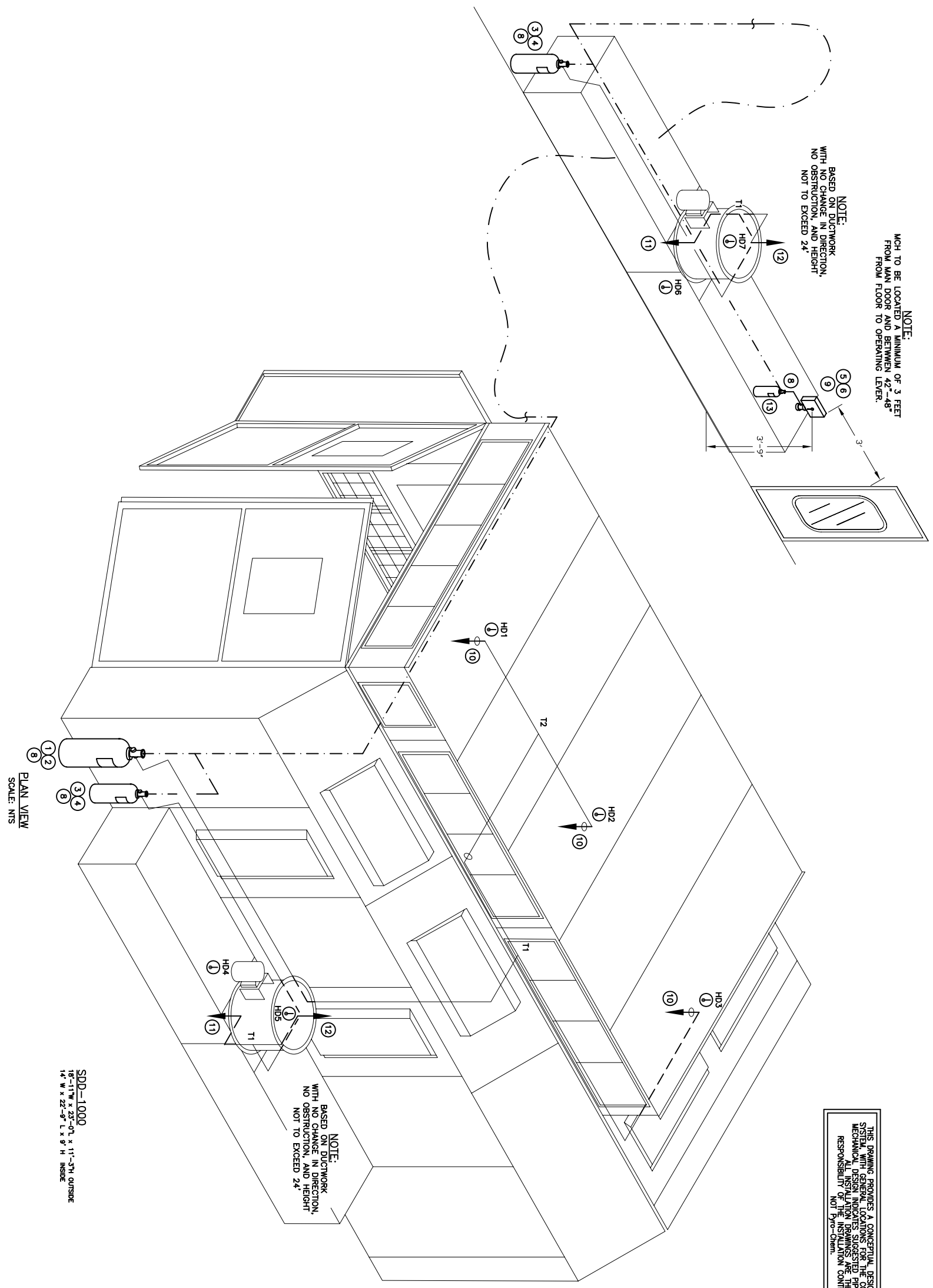
MAXIMUM # OF DETECTORS: 20
MAXIMUM LENGTH OF CABLE: 150 FEET
MAXIMUM # OF PULLEYS: 40

MODEL RPS-M CABLE RUN LIMITATIONS WHEN USED WITH MODEL MCH3, ECH3, AND NMCH3 CONTROL HEADS AND PART NO. 415670 AND 423250 PULLEY ELBOWS.

MAXIMUM LENGTH OF CABLE: 150 FEET
MAXIMUM # OF PULLEYS: 40 FEET

LEGEND

- SYSTEM PIPING
 - HIDDEN PIPING
 - - - - ACTUATION LINE
 - ⊗ NOZZLE IDENTIFIER
 - ▽ CONCENTRIC PIPE REDUCER
 - ⊕ DISCHARGE NOZZLE
 - ⊕ HEAT DETECTOR
- (NOTE: HEAT DETECTOR LAYOUTS ARE CONCEPTUAL. DETECTOR TYPE AND PLACEMENT ARE THE RESPONSIBILITY OF THE INSTALLING CONTRACTOR.)



PLAN VIEW
SCALE: NTS

SDD-1000
18'-11\"/>

REV	DESCRIPTION	DATE	BY	CHK
1	REMOVE DIMENSIONS, REVISE PIPING	11/8/06	CNH	CNH

PROJECT: MONARCH PRE-ENGINEERED DRY CHEMICAL VEHICLE PAINT BOOTH
PLAN AND ELEVATION VIEWS
THRU: STANDARD TOOLS AND EQUIPMENT
 SINGLE DOWN DRAFT-1000
 WITH OPTIONAL HEATER

DRAWING TITLE: MONARCH PRE-ENGINEERED DRY CHEMICAL VEHICLE PAINT BOOTH
PLAN AND ELEVATION VIEWS

Pyro-Chem
 ONE STANTON STREET
 MARINETTE, WI 54143

DRAWING NO. 1874
 SHEET: 1 of 3
 DATE: 10/31/06
1874-M01