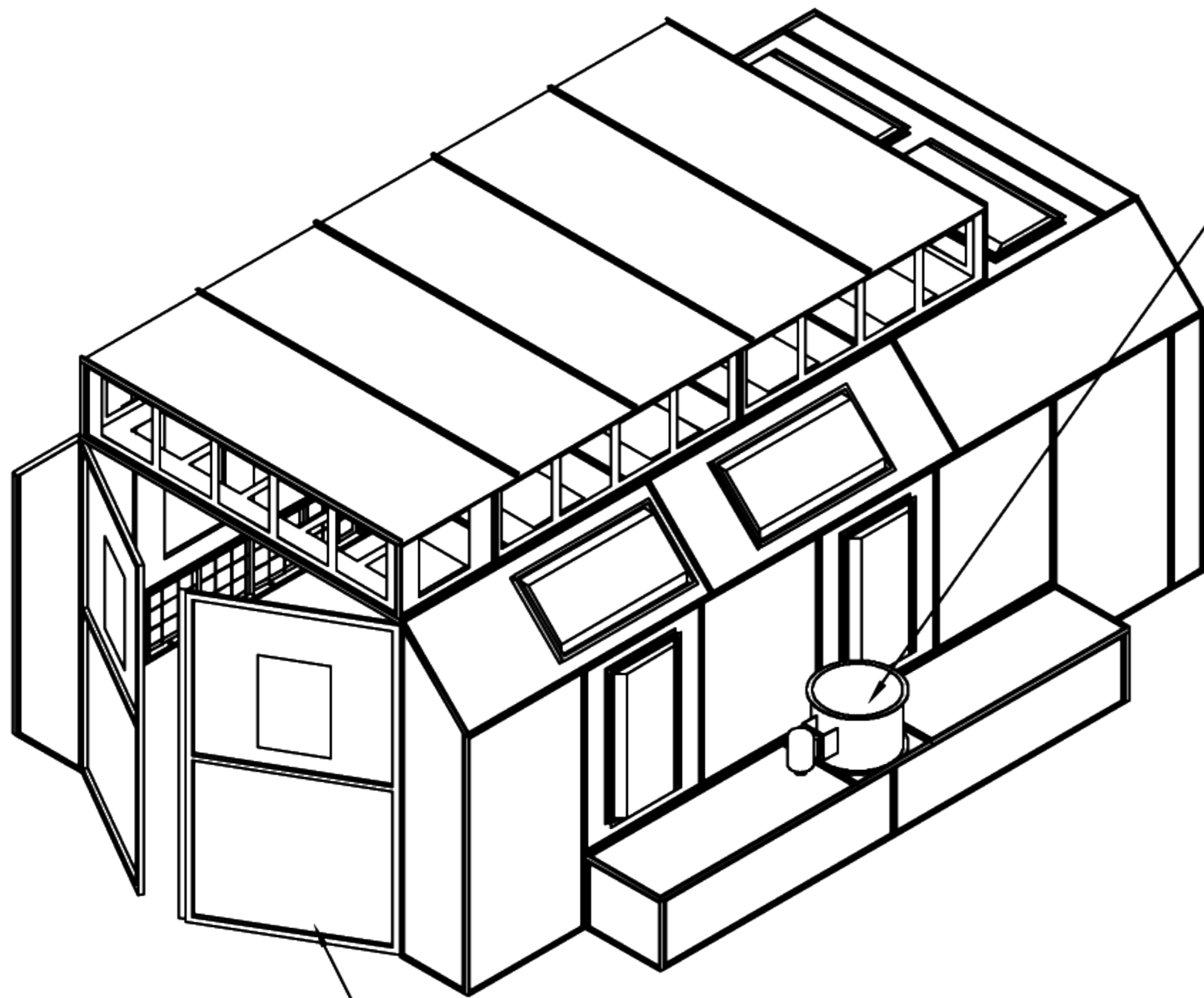
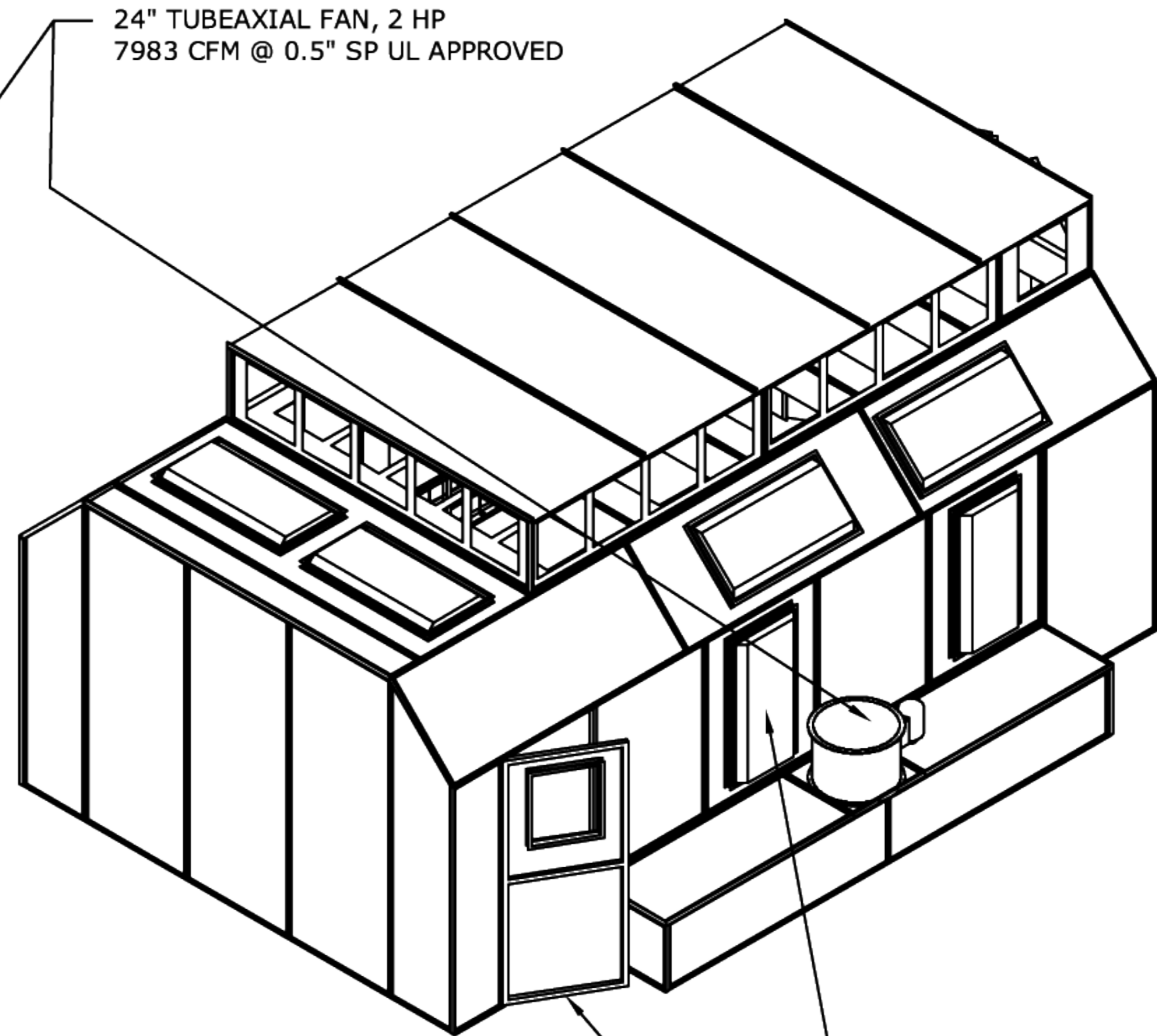


MANUFACTURED IN COMPLIANCE WITH NFPA 33, OSHA, NEC,  
AND BOCA GUIDELINES



10'W x 9'H DOUBLE DOORS



24" TUBEAXIAL FAN, 2 HP  
7983 CFM @ 0.5" SP UL APPROVED

PERSONNEL DOOR

24x48 LIGHT FIXTURE, ENCLOSED  
MOUNTED BEHIND 0.25" TEMPERED GLASS WINDOW  
UL LISTED, 10 FIXTURES PER BOOTH

**SDD-1000**

18'-11"W x 23'-0"L x 11'-3"H OUTSIDE  
14' W x 22'-9" L x 9' H INSIDE

NOTES:

- ALL MATERIALS OF CONSTRUCTION ARE NON-COMBUSTIBLE.
- ALL PANELS ARE 18 GA. GALV SHEET STEEL.
- WINDOWS ARE 1/4" TEMPERED GLASS.
- LIGHT FIXTURES ARE ENCLOSED 2x4 FLORESCENT LAYIN TYPE, UL APPROVED, MOUNTED BEHIND GLASS WINDOW.
- FAN IS TUBEAXIAL, ALUMINUM BLADE WITH DRIVE BELT IN ENCLOSED SHROUD, UL APPROVED.



Greensboro, NC 27405  
Ph - 1-800-451-2425

title	SDD-1000 SHEET 1 OF 3	
part no	SDD-1000	
order no	XXXXX	
drawn by	MBOWLES	date 10-29-03
file name	XXXX	rev B