

NOTE:
 BASED ON DUCTWORK
 WITH NO CHANGE IN DIRECTION,
 NO OBSTRUCTION, AND HEIGHT
 NOT TO EXCEED 24'

THIS DRAWING PROVIDES A CONCEPTUAL DESIGN OF THE SYSTEM WITH GENERAL LOCATIONS FOR THE COMPONENTS. MECHANICAL DESIGN AND INSTALLATION SHALL BE THE RESPONSIBILITY OF THE INSTALLING CONTRACTOR. NOT Pyro-Chem.

ITEM	QTY	PART No.	DESCRIPTION
1	1	5511994	PG-1-70 ARG. CBL. ASSEMBLY PKG.
2	1	3506398	MB-U12 12' UNISTRUT TYPE MOUNTING BRACKET
3	1	351200	MCH CONTROL HEAD
4	1	3509553	MFG BRACKET, CONTROL HEAD
5	1	24751	BAC-612 BELL, 6, 120 VAC
6	1	5509829	PGA-D2 PNEUMATIC DISCHARGE ADAPTOR
7	1	551511	PC VEHICLE BOOTH TIME DELAY
8	3	551850	IN-WA NOZZLE ASSEMBLY
9	1	551652	IN-P1 NOZZLE ASSEMBLY
10	1	551853	IN-PP2 NOZZLE ASSEMBLY
11	1	551155	MS-DP0T Two-Switch Kit

NOTE: BILL OF MATERIALS IS NOT ALL INCLUSIVE. DOES NOT INCLUDE FUSIBLE LINK, BRACKET ASSEMBLY, CORNER PULLEYS, WIRE PIPE, ETC.

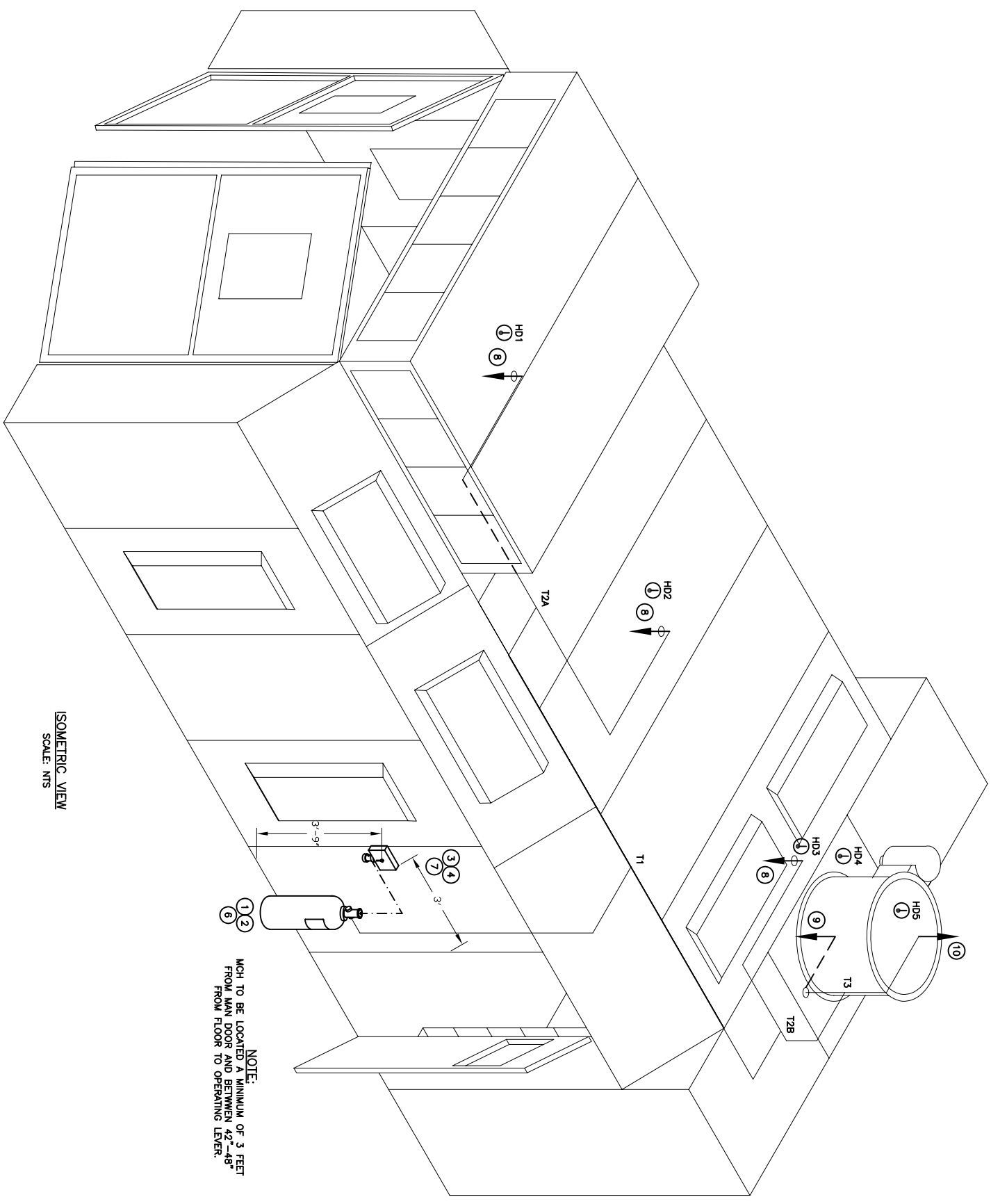
MINIMUM OF 3 DETECTORS IN WORK AREA
 MINIMUM OF 2 DETECTORS IN PLENUM AND DUCT AREA.

FUSIBLE LINK LINE LIMITATIONS WHEN USED WITH MODEL MCH3 AND NMCH3 CONTROL HEADS AND PART NO. 415670 AND 423250 PULLEY ELBOWS.

MAXIMUM # OF DETECTORS: 20
 MAXIMUM LENGTH OF CABLE: 150 FEET
 MAXIMUM # OF PULLEYS: 40

MODEL RPS-M CABLE RUN LIMITATIONS WHEN USED WITH MODEL MCH3, ECH3, AND NMCH3 CONTROL HEADS AND PART NO. 415670 AND 423250 PULLEY ELBOWS.

MAXIMUM LENGTH OF CABLE: 150 FEET
 MAXIMUM # OF PULLEYS: 40 FEET



NOTE:
 MCH TO BE LOCATED A MINIMUM OF 3 FEET FROM MAIN DOOR AND BETWEEN 42'-48\"/>

ISOMETRIC VIEW
 SCALE: NTS

SEMI-DOWN DRAFT-1000
 14'-3\"/>

- LEGEND
- SYSTEM PIPING
 - - - HIDDEN PIPING
 - - - - ACTUATION LINE
 - (X) NOZZLE IDENTIFIER
 - ∇ CONCENTRIC PIPE REDUCER
 - ⊕ DISCHARGE NOZZLE
 - ⊙ HEAT DETECTOR
- (NOTE: HEAT DETECTOR LAYOUTS ARE CONCEPTUAL. DETECTOR TYPE AND PLACEMENT ARE THE RESPONSIBILITY OF THE INSTALLING CONTRACTOR.)

DRAWING TITLE:
 MONARCH PRE-ENGINEERED DRY CHEMICAL VEHICLE PAINT BOOTH ISOMETRIC VIEW

THRU: STANDARD TOOLS AND EQUIPMENT
 SEMI-DOWN DRAFT-1000



Pyro-Chem
 ONE STANTON STREET
 MARINETTE, WI 54143

REV	DESCRIPTION	DATE	BY	CHK

THIS DRAWING AND THE DATA CONTAINED HEREIN ARE THE PROPERTY OF Pyro-Chem. EXPRESS CONSENT OF THE COMPANY MUST BE OBTAINED FOR REPRODUCTION OR TRANSMISSION IN ANY FORM OR BY ANY MEANS, ELECTRONIC OR MECHANICAL, INCLUDING PHOTOCOPYING, RECORDING, OR BY ANY INFORMATION STORAGE AND RETRIEVAL SYSTEM. WITHOUT THE WRITTEN AUTHORIZATION OF THE COMPANY.

DRAWING NO. 1946-1
 SHEET: 1 of 3

DATE: 1/22/07

1946-M01