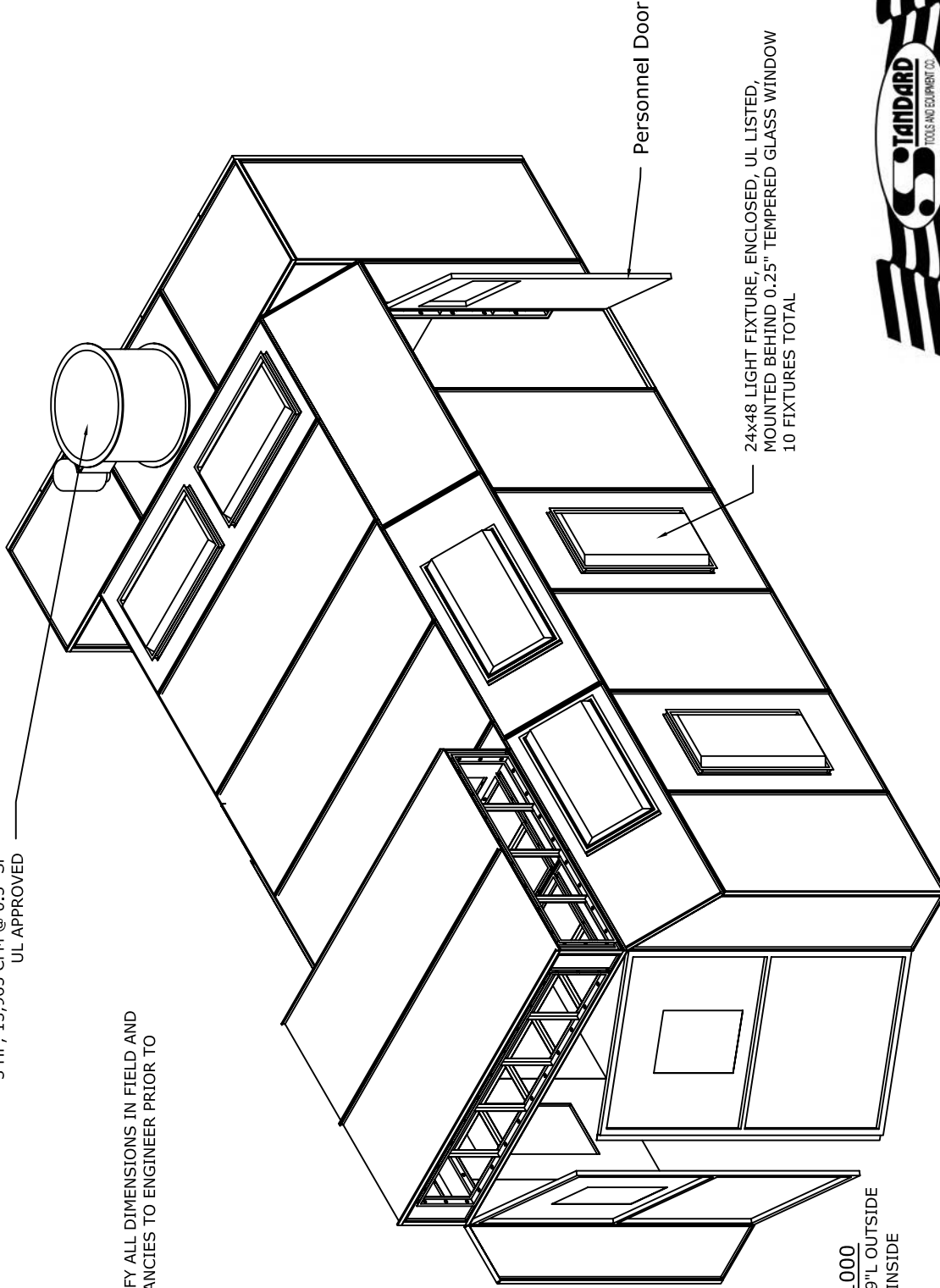


EXHAUST FAN, 34" DIA
 3 HP, 13,965 CFM @ 0.5" SP
 UL APPROVED

MANUFACTURED IN COMPLIANCE WITH NFPA 33, OSHA, NEC,
 AND BOCA GUIDELINES

NOTE:
 CONTRACTOR TO VERIFY ALL DIMENSIONS IN FIELD AND
 REPORT ANY DISCREPANCIES TO ENGINEER PRIOR TO
 STARTING WORK



SEMI-DOWN DRAFT-1000
 14'-3"W x 11'-1-1/2"H x 26'-9"L OUTSIDE
 14'-0"W x 9'-0"H x 26'-6"L INSIDE

24x48 LIGHT FIXTURE, ENCLOSED, UL LISTED,
 MOUNTED BEHIND 0.25" TEMPERED GLASS WINDOW
 10 FIXTURES TOTAL



Greensboro, NC 27405
 Ph - 1-800-451-2425

title	SD-1000 SH 1 OF 2
part no	SD-1000
order no	-
drawn by	MBOWLES
date	10-6-04
file name	XXXX
rev	B

NOTES:

- ALL MATERIALS OF CONSTRUCTION ARE NON-COMBUSTIBLE.
- ALL PANELS ARE 18 GA. GALV SHEET STEEL.
- WINDOWS ARE 1/4" TEMPERED GLASS.
- LIGHT FIXTURES ARE ENCLOSED 2x4 FLORESCENT LAYIN TYPE, UL APPROVED, MOUNTED BEHIND GLASS WINDOW.
- FAN IS TUBEAXIAL, ALUMINUM BLADE WITH DRIVE BELT IN ENCLOSED SHROUD, UL APPROVED.