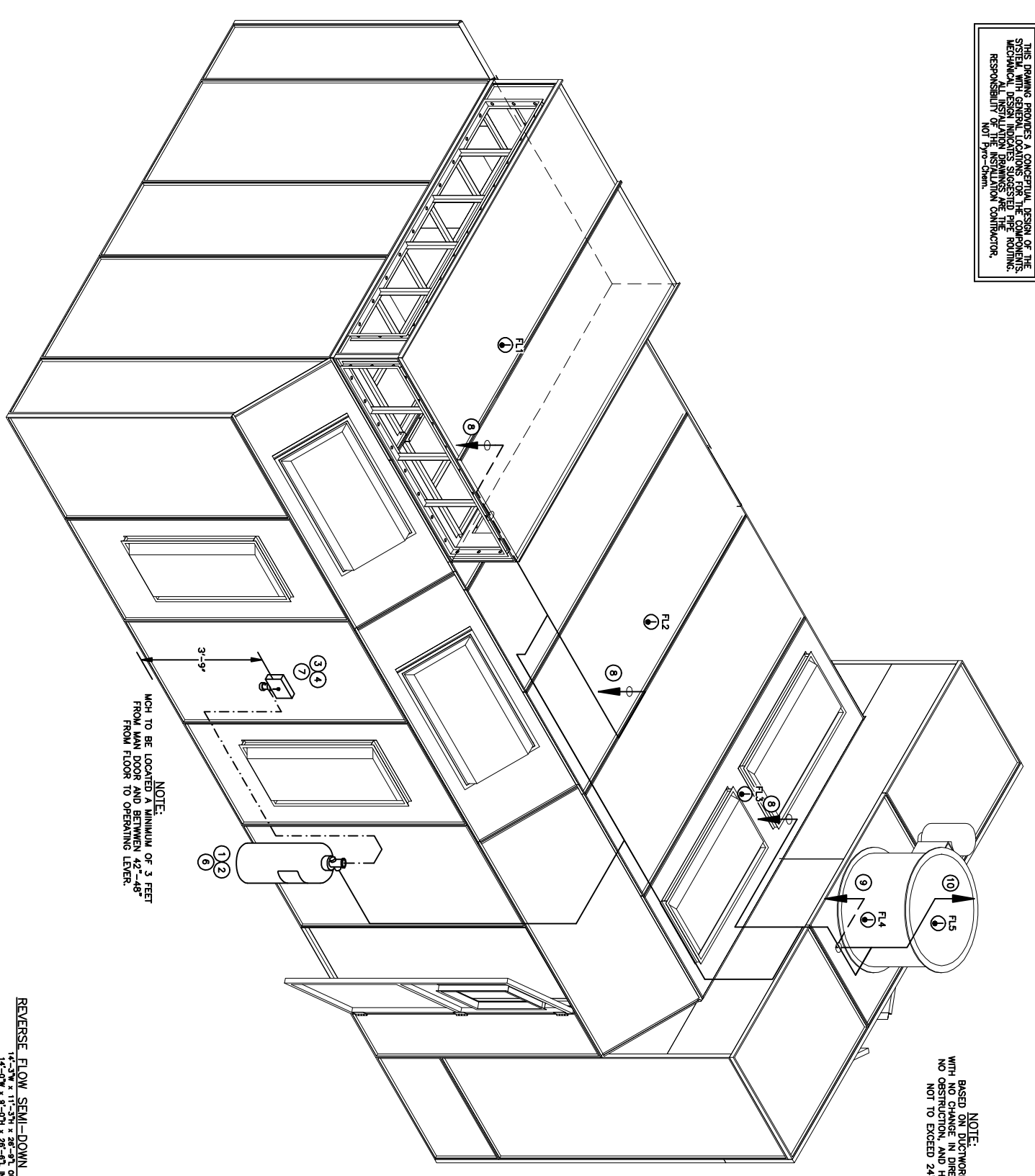


THIS DRAWING REQUIRES A CONCEPTUAL DESIGN OF THE SYSTEM WITH GENERAL LOCATIONS FOR THE COMPONENTS MECHANICAL DESIGN INDICATES SUGGESTED PIPE ROUTING. RESPONSIBILITY FOR THE FINAL DESIGN AND INSTALLATION IS NOT BY PYS-CHEM.



NOTE:
BASED ON DUCTWORK
WITH NO CHANGE IN DIRECTION,
NO OBSTRUCTION, AND HEIGHT
NOT TO EXCEED 24'

NOTE:
MCH TO BE LOCATED A MINIMUM OF 3 FEET
FROM MAIN DOOR AND BETWEEN 42"-48"
FROM FLOOR TO OPERATING LEVEL.

REVERSE FLOW SEMI-DOWN DRAFT-1000
14'-3 1/2" x 11'-3 1/4" x 28'-9 1/4" OUTSIDE
14'-0 1/2" x 9'-0 1/4" x 28'-0 1/4" INSIDE

ISOMETRIC VIEW
SCALE: NTS

ITEM	QTY	PART No.	DESCRIPTION
1	1	551094	PG1-70 ABC CTL ASSEMBLY PKG.
2	1	550638	M8-U12 1/2 UNSURF TYPE MOUNTING BRACKET
3	1	551200	MCH CONTROL HEAD
4	1	550883	MCH BRACKET, CONTROL HEAD
5	1	247510	BAC-612 BELL, 6, 120 MCH
6	1	550829	PA-02 PNEUMATIC DISCHARGE ADAPTOR
7	1	551511	TP-10 TIME DELAY, VEHICLE BOOTH
8	3	551690	NP-M4 NOZZLE ASSEMBLY
9	1	551692	NP-P12 NOZZLE ASSEMBLY
10	1	551693	NP-D12 NOZZLE ASSEMBLY
11	1	551193	MS-DP01 TWO-SWITCH KIT

NOTE: BILL OF MATERIALS IS NOT ALL INCLUSIVE.
DOES NOT INCLUDE FUSIBLE LINK, BRACKET ASSEMBLY,
CORNER PULLEYS, WIRE PIPE, ETC.
MINIMUM OF 3 DETECTORS IN WORK AREA
MINIMUM OF 2 DETECTORS IN EACH PLENUM AND DUCT AREA.

FUSIBLE LINK LINE LIMITATIONS WHEN USED WITH
MODEL MCH3 AND MCH35 CONTROL HEADS AND PART NO.
415670 AND 423250 PULLEY ELBOWS.
MAXIMUM # OF DETECTORS: 20
MAXIMUM LENGTH OF CABLE: 150 FEET
MAXIMUM # OF PULLEYS: 40

MODEL RPS-M CABLE RUN LIMITATIONS WHEN USED WITH
MODEL MCH3, ECH3, AND MCH35 CONTROL HEADS AND
PART NO. 415670 AND 423250 PULLEY ELBOWS.
MAXIMUM LENGTH OF CABLE: 150 FEET
MAXIMUM # OF PULLEYS: 40 FEET

LEGEND

- SYSTEM PIPING
- HIDDEN PIPING
- - - - ACTUATION LINE
- (X) NOZZLE IDENTIFIER
- (F) FUSIBLE LINK (FL)

(NOTE: HEAT DETECTOR LAYOUTS ARE
CONCEPTUAL. DETECTOR TYPE AND
PLACEMENT ARE THE RESPONSIBILITY
OF THE INSTALLING CONTRACTOR.)

DRAWING TITLE:
MONARCH PRE-ENGINEERED DRY CHEMICAL
VEHICLE PAINT BOOTH
ISOMETRIC VIEW
THRU: STANDARD TOOLS AND EQUIPMENT
RFS-1000

REV	DESCRIPTION	DATE	BY	CHK	DRAWN BY	IS	SCALE	DRAWING NO.

PYS-CHEM
ONE STANTON STREET
MAYNARD, MA 01940
2043-M01