

NOTE:
 BASED ON DUCTWORK
 WITH NO CHANGE IN DIRECTION,
 NO OBSTRUCTION, AND HEIGHT
 NOT TO EXCEED 24'

THIS DRAWING PROVIDES A CONCEPTUAL DESIGN OF THE
 SYSTEM WITH GENERAL LOCATIONS FOR THE COMPONENTS.
 MECHANICAL DESIGNATION SYMBOLS ARE THE PROPERTY OF
 THE MANUFACTURER AND SHOULD BE USED AS THE ROOMING,
 RESPONSIBILITY OF THE INSTALLATION CONTRACTOR.
 NOT Pyro-Chem.

ITEM	QTY	PART No.	DESCRIPTION
1	1	551097	PG-1-35 ARG CTL ASSEMBLY PKG.
2	1	550383	MR-010 10' UNISTRUT TYPED MOUNTING BRACKET
3	1	551200	MCH CONTROL HEAD
4	1	24751	BAC-612 BELL, 6, 120 VAC
5	1	551098	N-SCR NOZZLE ASSEMBLY
6	1	551099	N-OFF NOZZLE ASSEMBLY
7	1	551100	N-PLU NOZZLE ASSEMBLY
8	1	551101	N-DCT NOZZLE ASSEMBLY
9	1	551135	MS-DP0T TWO SWITCH KIT

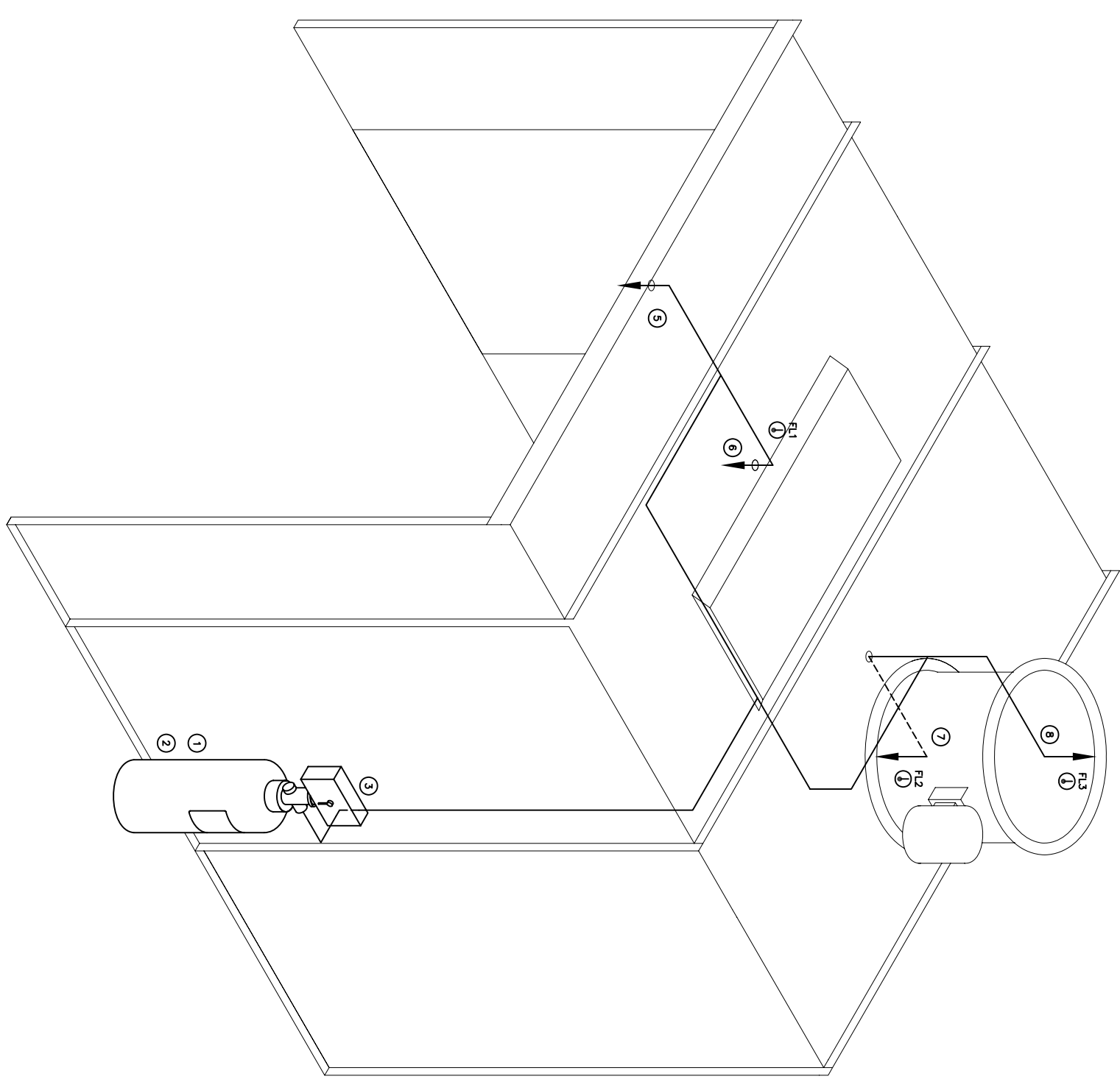
NOTE: BILL OF MATERIALS IS NOT ALL INCLUSIVE
 DOES NOT INCLUDE FUSIBLE LINK, BRACKET ASSEMBLY,
 CORNER PULLEYS, WIRE PIPE, ETC.
 MINIMUM OF 1 DETECTORS IN WORK AREA
 MINIMUM OF 2 DETECTORS IN EACH PLENUM AND DUCT AREA.

FUSIBLE LINK LINE LIMITATIONS WHEN USED WITH
 MODEL MCH3 AND NMCH3 CONTROL HEADS AND PART NO.
 415670 AND 423250 PULLEY ELBOWS.
 MAXIMUM # OF DETECTORS: 20
 MAXIMUM LENGTH OF CABLE: 150 FEET
 MAXIMUM # OF PULLEYS: 40

MODEL RPS-M CABLE RUN LIMITATIONS WHEN USED WITH
 MODEL MCH3, ECH3, AND NMCH3 CONTROL HEADS AND
 PART NO. 415670 AND 423250 PULLEY ELBOWS.
 MAXIMUM LENGTH OF CABLE: 150 FEET
 MAXIMUM # OF PULLEYS: 40 FEET

LEGEND

- SYSTEM PIPING
 - HIDDEN PIPING
 - ⊗ BILL OF MATERIAL ITEM NUMBER
 - ∇ CONCENTRIC PIPE REDUCER
 - ⊕ DISCHARGE NOZZLE
 - ⓧ FUSIBLE LINK (FL)
- (NOTE: HEAT DETECTOR LAYOUTS ARE
 CONCEPTUAL. DETECTOR TYPE AND
 PLACEMENT ARE THE RESPONSIBILITY
 OF THE INSTALLING CONTRACTOR.)



OPEN FACE INDUSTRIAL BOOTH OFB-1000
 8'-3 1/2" x 7'-4 1/2" x 8'-0 1/2" OUTSIDE
 8'-0" x 7'-0 1/4" x 6'-5 1/2" INSIDE

ISOMETRIC VIEW
 SCALE: NTS

DRAWING TITLE:
 MONARCH PRE-ENGINEERED DRY CHEMICAL
 OPEN FACE INDUSTRIAL BOOTH
 ISOMETRIC VIEW
 THRU: STANDARD TOOLS AND EQUIPMENT
 OFB-1000-8



Pyro-Chem
 ONE STANTON STREET
 MARINETTE, WI 54143

REV	DESCRIPTION	DATE	DRN	CHK	DATE

THIS DRAWING AND THE DATA CONTAINED HEREIN ARE THE PROPERTY OF Pyro-Chem
 EXPRESS CONSENT OF THE COMPANY FOR SHALL ANY DATA OR INFORMATION
 BE REPRODUCED OR TRANSMITTED IN ANY FORM OR BY ANY MEANS, ELECTRONIC OR
 MECHANICAL, INCLUDING PHOTOCOPYING, RECORDING, OR BY ANY INFORMATION
 EXPRESS WRITTEN AUTHORIZATION OF THE COMPANY.

DATE: 04/05/07
 DRAWING NO: 2002-M01
 SHEET: 1 OF 3