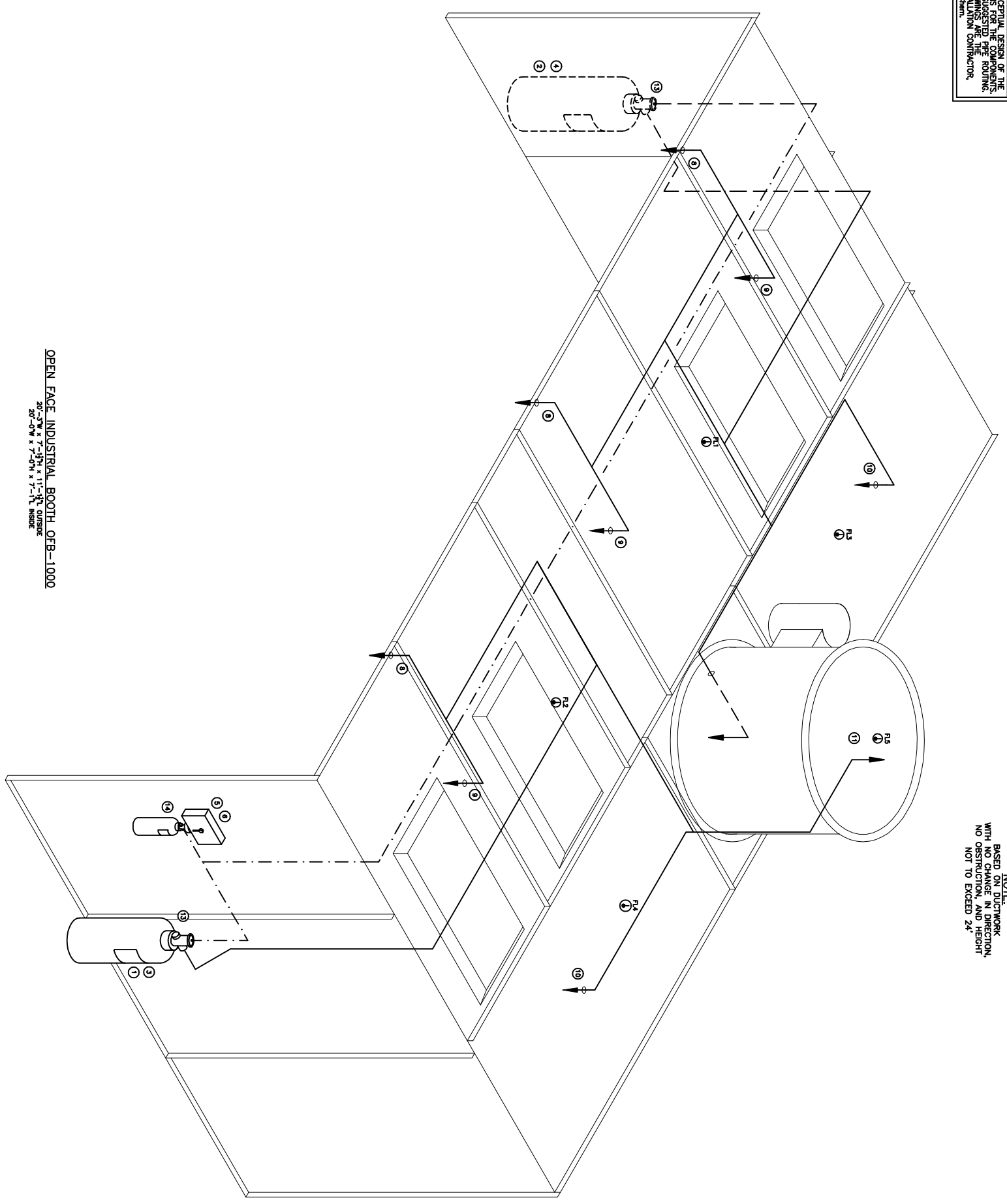


THIS DRAWING REQUIRES A CONCEPTUAL DESIGN OF THE SYSTEM WITH GENERAL CONDITIONS FOR THE COMPONENTS. MECHANICAL DESIGN INDICATES SUGGESTED PIPE ROUTING. MECHANICAL INSTALLATION DRAWINGS ARE THE RESPONSIBILITY OF THE INSTALLING CONTRACTOR, NOT PFC-CHEM.

NOTE:
BASED ON DUCTWORK WITH NO CHANGE IN DIRECTION, NO OBSTRUCTION, AND HEIGHT NOT TO EXCEED 24'



OPEN FACE INDUSTRIAL BOOTH OFB-1000

200'-0" W x 2'-0" H x 7'-0" D
200'-0" W x 2'-0" H x 7'-0" D
200'-0" W x 2'-0" H x 7'-0" D

ISOMETRIC VIEW
SCALE: NTS

ITEM	QTY	PART No.	DESCRIPTION
1	1	551097	EQ-35 ABC CYL ASSEMBLY Pkg.
2	1	551094	EQ-70 ABC CYL ASSEMBLY Pkg.
3	1	550983	MB-10 10" UNSURFUT THE MOUNTING BRACKET
4	1	550658	MB-U12 12" UNSURFUT THE MOUNTING BRACKET
5	1	551200	MCH CONTROL HEAD WITH LOCAL ACTUATION
6	1	550653	MB-PZ MOUNTING BRACKET, CONTROL HEAD
7	1	44751	BAC-612 BELL, 6x 120 VAC
8	3	551098	N-SOR NOZZLE ASSEMBLY
9	3	551099	N-OTF NOZZLE ASSEMBLY
10	3	551100	N-FLU NOZZLE ASSEMBLY
11	1	551101	US-DOF NOZZLE ASSEMBLY
12	2	550229	MS-DRD PNEUMATIC SWITCH KIT
13	2	550229	PA2-UZ PNEUMATIC DISCHARGE ADAPTOR
14	1	550104	PA2-10 PNEUMATIC ACTUATING CYLINDER

NOTE: BILL OF MATERIALS IS NOT ALL INCLUSIVE. DOES NOT INCLUDE FUSIBLE LINK, BRACKET ASSEMBLY, CORNER PULLEYS, WIRE PIPE, ETC.
MINIMUM OF 2 DETECTORS IN WORK AREA
MINIMUM OF 3 DETECTORS IN EACH PLENUM AND DUCT AREA.

FUSIBLE LINK LINE LIMITATIONS WHEN USED WITH MODEL MCH3 AND NMCH3 CONTROL HEADS AND PART NO. 415670 AND 423250 PULLEY ELBOWS.
MAXIMUM # OF DETECTORS: 20
MAXIMUM LENGTH OF CABLE: 150 FEET
MAXIMUM # OF PULLEYS: 40

MODEL RPS-M CABLE RUN LIMITATIONS WHEN USED WITH MODEL MCH3, ECH3, AND NMCH3 CONTROL HEADS AND PART NO. 415670 AND 423250 PULLEY ELBOWS.
MAXIMUM LENGTH OF CABLE: 150 FEET
MAXIMUM # OF PULLEYS: 40 FEET

- LEGEND
- SYSTEM PIPING
 - - - ACTUATION PIPING
 - - - HIDDEN PIPING
 - (X) BILL OF MATERIAL ITEM NUMBER
 - ▽ CONCENTRIC PIPE REDUCER
 - ⊕ DISCHARGE NOZZLE
 - ① FUSIBLE LINK (FL)
 - XXX
- (NOTE: HEAT DETECTOR LAYOUTS ARE DEVELOPED BY PFC-CHEM AND PLACEMENT ARE THE RESPONSIBILITY OF THE INSTALLING CONTRACTOR.)

ISSUING TITLE:
MONARCH PRE-ENGINEERED DRY CHEMICAL
OPEN FACE INDUSTRIAL BOOTH
ISOMETRIC VIEW
THRU: STANDARD TOOLS AND EQUIPMENT
OFB-1000-20

PFC-CHEM
ONE STANTON STREET
MANNINGVILLE, WI 53143
DATE: 04/17/07
SCALE: NTS
SHEET: 1 OF 3

REV	DESCRIPTION	DATE	BY	CHK

THIS DRAWING AND THE DATA CONTAINED HEREIN ARE THE PROPERTY OF PFC-CHEM. EXPRESS OR IMPLIED PERMISSION IS GRANTED TO REPRODUCE THIS DRAWING FOR THE EXPRESS PURPOSES OF THE COMPANY'S BUSINESS ONLY. ANY OTHER REPRODUCTION OR USE WITHOUT THE WRITTEN AUTHORIZATION OF THE COMPANY IS PROHIBITED.

2002-M01