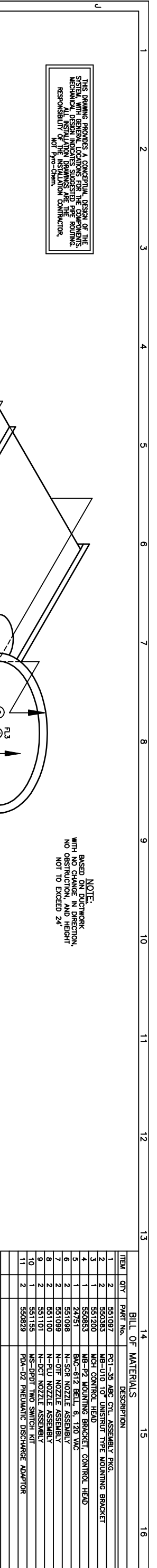


THIS DRAWING PROVIDES A CONCEPTUAL DESIGN OF THE SYSTEM WITH GENERAL CONDITIONS FOR THE COMPONENTS. MECHANICAL DESIGN INDICATES SUGGESTED PIPE ROUTING. MECHANICAL INSTALLATION DRAWINGS ARE THE RESPONSIBILITY OF THE INSTALLING CONTRACTOR. NOT FOR CONSTRUCTION.

NOTE: BASED ON DUCTWORK WITH NO CHANGE IN DIRECTION, NO OBSTRUCTION, AND HEIGHT NOT TO EXCEED 24'



OPEN FACE INDUSTRIAL BOOTH OFB-1000
 12'-0" W x 7'-0" H x 11'-0" L OUTSIDE
 12'-0" W x 7'-0" H x 8'-0" L INSIDE

ISOMETRIC VIEW
 SCALE: NTS

ITEM	QTY	PART No.	DESCRIPTION
1	2	551097	FCI-35 ABC CTL ASSEMBLY PKG.
2	2	550083	MB-U10 TOP UNSHIRT TYPE MOUNTING BRACKET
3	1	551200	MCH CONTROL HEAD
4	1	550083	MB-F2 MOUNTING BRACKET, CONTROL HEAD
5	1	24751	BAC-612 BELL, 6, 120 VAC
6	2	551098	N-SCR NOZZLE ASSEMBLY
7	2	551099	N-OF NOZZLE ASSEMBLY
8	2	551100	N-FLU NOZZLE ASSEMBLY
9	2	551101	N-DET NOZZLE ASSEMBLY
10	1	551153	MS-DPDI TWO SWITCH KIT
11	2	550029	FDN-02 PNEUMATIC DISCHARGE ADAPTOR

NOTE: BILL OF MATERIALS IS NOT ALL INCLUSIVE. DOES NOT INCLUDE FUSIBLE LINK, BRACKET ASSEMBLY, CORNER PULLEYS, WIRE PIPE, ETC.
 MINIMUM OF 1 DETECTORS IN WORK AREA
 MINIMUM OF 2 DETECTORS IN EACH PLENUM AND DUCT AREA.

FUSIBLE LINK LINE LIMITATIONS WHEN USED WITH MODEL MCH3, ECH3, AND NMCH3 CONTROL HEADS AND PART NO. 415070 AND 423250 PULLEY ELBOWS.
 MAXIMUM # OF DETECTORS: 20
 MAXIMUM LENGTH OF CABLE: 150 FEET
 MAXIMUM # OF PULLEYS: 40

MODEL RPS-M CABLE RUN LIMITATIONS WHEN USED WITH MODEL MCH3, ECH3, AND NMCH3 CONTROL HEADS AND PART NO. 415670 AND 423250 PULLEY ELBOWS.
 MAXIMUM LENGTH OF CABLE: 150 FEET
 MAXIMUM # OF PULLEYS: 40 FEET

- LEGEND
- SYSTEM PIPING
 - HIDDEN PIPING
 - (X) BILL OF MATERIAL ITEM NUMBER
 - ▽ CONCENTRIC PIPE REDUCER
 - ⊕ DISCHARGE NOZZLE
 - ① FUSIBLE LINK (FL)
 - XXX (NOTE: HEAT DETECTOR LAYOUTS ARE DEVELOPED BY THE INSTALLING CONTRACTOR AND PAYMENTS ARE THE RESPONSIBILITY OF THE INSTALLING CONTRACTOR.)

ISSUING TITLE: MONARCH PRE-ENGINEERED DRY CHEMICAL OPEN FACE INDUSTRIAL BOOTH ISOMETRIC VIEW
 THROUGH: STANDARD TOOLS AND EQUIPMENT OFB-1000-12

PIE-Chem
 ONE STANTON STREET
 MANWATER, WI 53143

REV	DESCRIPTION	DATE	BY	CHK

DATE: 04/10/07
 DRAWN BY: IS
 CHECKED BY: CHM
 JOB NO: 2002
 SHEET: 1 OF 3
 2002-M01