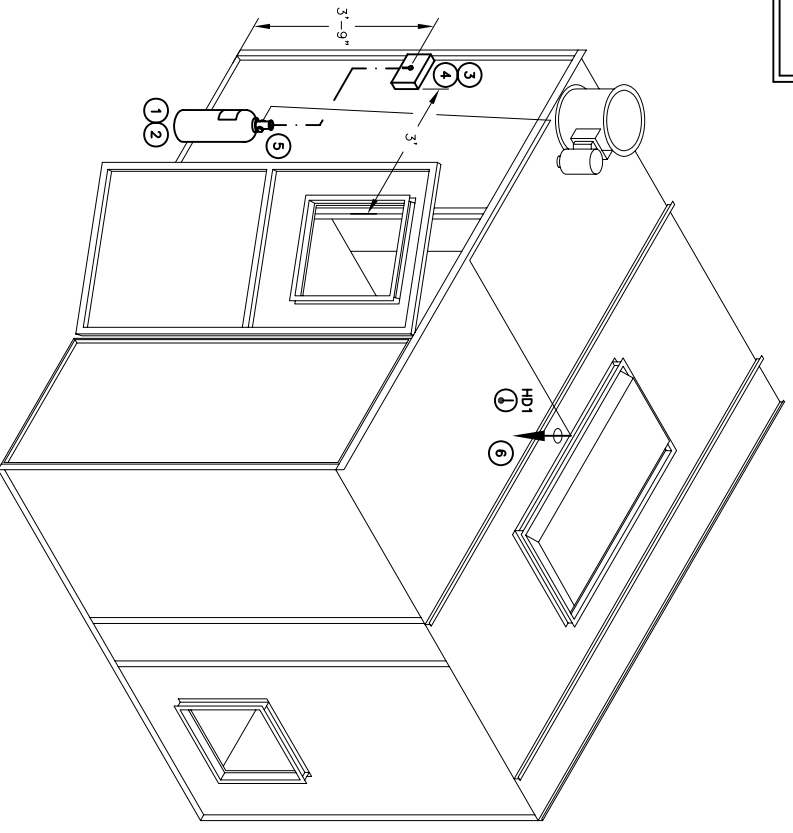


THIS DRAWING PROVIDES A CONCEPTUAL DESIGN OF THE SYSTEM WITH GENERAL LOCATIONS FOR THE COMPONENTS. MECHANICAL DESIGN AND INSTALLATION DETAILS, DIMENSIONS, MATERIALS, AND INSTALLATION DRAWINGS ARE THE RESPONSIBILITY OF THE INSTALLATION CONTRACTOR. NOT PYP-CHEM.

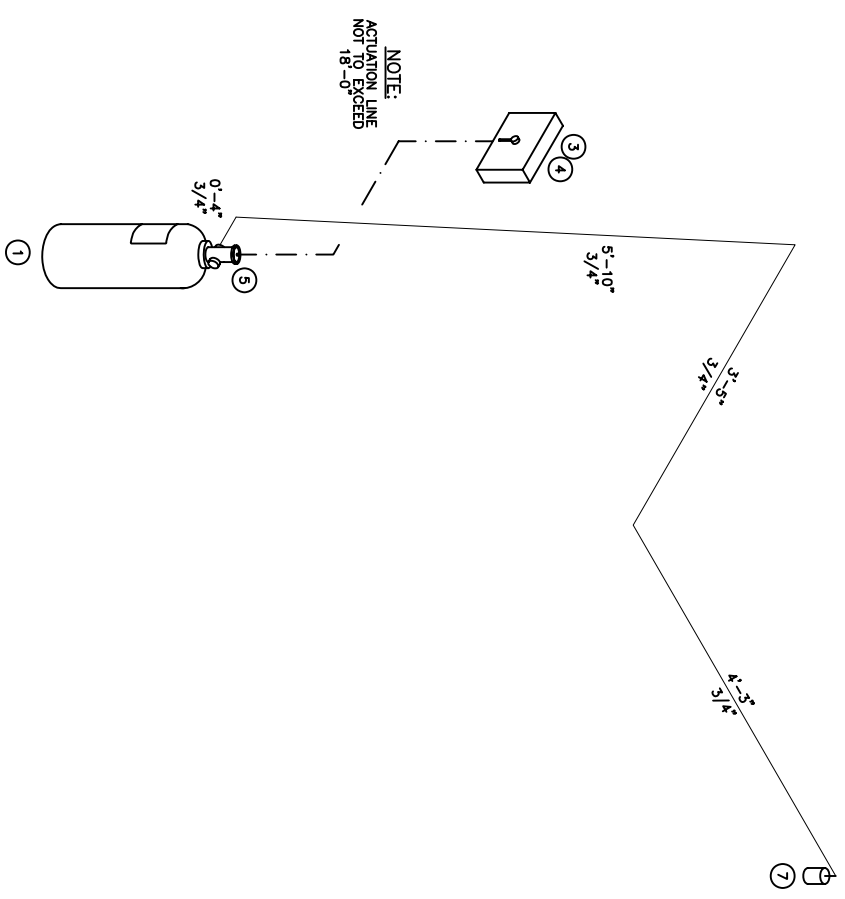
MR-1000 MIX ROOM  
 INSIDE 9'-9"W x 8'-1"D x 7'-0"H  
 OUTSIDE 10'-0"W x 8'-4"D x 7'-1 1/2"H



ISOMETRIC VIEW  
 SCALE: NTS

NOTE:  
 MCH TO BE LOCATED A MINIMUM OF 3 FEET FROM MAN DOOR AND BETWEEN 42"-48" FROM FLOOR TO OPERATING LEVER.

\* CAUTION \*  
 THIS ISOMETRIC REPRESENTATION IS SCHEMATIC IN NATURE AND IS NOT TO BE USED FOR CONSTRUCTION OR PIPE FABRICATION PURPOSES. THE INSTALLATION CONTRACTOR IS RESPONSIBLE FOR VERIFICATION OF EXACT ROUTING AND PIPE LENGTHS IN THE FIELD.



PIPING ISOMETRIC  
 SCALE: NTS

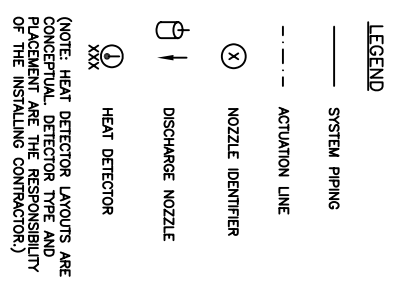
NOTE:  
 ACTUATION LINE NOT TO EXCEED 18'-0"

ITEM	QTY	PART No.	DESCRIPTION
1	1	551654	PCL-17 ARG CBL ASSEMBLY PKG.
2	1	550324	MB-08 8 UNISTRUT TIE MOUNTING BRACKET
3	1	551200	MCH CONTROL HEAD
4	1	550853	MTG BRACKET CONTROL HEAD
5	1	550829	PDA-D2 PNEUMATIC ACTUATION
6	1	551650	NY-WA NOZZLE ASSEMBLY
7	1	24751	BAC-612 BELL, 6, 120 VAC

NOTE: BILL OF MATERIALS IS NOT ALL INCLUSIVE. DOES NOT INCLUDE FUSIBLE LINK, BRACKET ASSEMBLY, CORNER PULLEYS, WIRE PIPE, ETC.  
 MINIMUM OF 1 DETECTOR IN WORK AREA

FUSIBLE LINK LINE LIMITATIONS WHEN USED WITH MODEL MCH3 AND NMCH3 CONTROL HEADS AND PART NO. 415670 AND 423250 PULLEY ELBOWS.  
 MAXIMUM # OF DETECTORS: 20  
 MAXIMUM LENGTH OF CABLE: 150 FEET  
 MAXIMUM # OF PULLEYS: 40

MODEL RPS-M CABLE RUN LIMITATIONS WHEN USED WITH MODEL MCH3, ECH3, AND NMCH3 CONTROL HEADS AND PART NO. 415670 AND 423250 PULLEY ELBOWS.  
 MAXIMUM LENGTH OF CABLE: 150 FEET  
 MAXIMUM # OF PULLEYS: 40 FEET



DRAWING TITLE:  
 MONARCH PRE-ENGINEERED DRY CHEMICAL MIXING ROOM  
 ISOMETRIC VIEW AND PIPING ISOMETRIC  
 CUSTOMER:  
 THRU: STANDARD TOOLS AND EQUIPMENT  
 MR-1000

REV	DESCRIPTION	DATE	DRN	CHK	DATE	DRWING NO.	SCALE	DATE

THIS DRAWING AND THE DATA CONTAINED HEREIN ARE THE PROPERTY OF PYP-CHEM. EXPRESS CONSENT OF THE COMPANY MUST BE OBTAINED IN WRITING FOR REPRODUCTION OR TRANSMISSION IN ANY FORM OR BY ANY MEANS, ELECTRONIC OR MECHANICAL, INCLUDING PHOTOCOPYING, RECORDING, OR BY ANY INFORMATION STORAGE AND RETRIEVAL SYSTEM. WITHOUT THE WRITTEN AUTHORIZATION OF THE COMPANY.

DRAWN BY: CNH  
 CHECKED BY: CNH  
 DATE: 12/20/06  
 SHEET: 1 OF 2

Pro-Chem  
 ONE STANTON STREET  
 MARINETTE, WI 54143  
 1915-M01