

THIS DRAWING PROVIDES A CONCEPTUAL DESIGN OF THE SYSTEM WITH GENERAL LOCATIONS FOR THE COMPONENTS. ALL INSTALLATION DRAWINGS ARE THE RESPONSIBILITY OF THE INSTALLATION CONTRACTOR, NOT PYS-CHEM.

NOTE:
BASED ON WORK
WITH NO OBSTRUCTION
NO OBSTRUCTION AND HEIGHT
NOT TO EXCEED 24'

NOTE:
MCH TO BE LOCATED A MINIMUM OF 3 FEET
FROM MAIN DOOR AND BETWEEN 42"-48"
FROM FLOOR TO OPERATING LEVER.

PARTS BOOTH IPB-1000
10'-0" H x 12'-0" W x 12'-0" D
8'-0" H x 7'-0" W x 12'-0" D INSIDE

ITEM	QTY	PART No.	DESCRIPTION
1	1	551097	PG1-35 ABC CTL ASSEMBLY PKG.
2	1	550083	M8-U10 TOR UNSRUT TYPE MOUNTING BRACKET
3	1	551200	MCH CONTROL HEAD
4	1	550083	M8-F2 MOUNTING BRACKET, CONTROL HEAD
5	1	247519	BAC-612 BELL, 6, 120 VAC
6	1	550029	PD-02 FRENCHMAN DISCHARGE ADAPTOR
7	1	551511	10"-10 TIME DELAY VEHICLE BOOTH
8	1	551690	1W-M4 NOZZLE ASSEMBLY
9	1	551692	1W-D12 NOZZLE ASSEMBLY
10	1	551693	1W-D12 NOZZLE ASSEMBLY
11	1	551193	M8-D10 TWO-SWITCH KIT

NOTE: BILL OF MATERIALS IS NOT ALL INCLUSIVE.
DOES NOT INCLUDE FUSIBLE LINK, BRACKET ASSEMBLY,
CORNER PULLEYS, WIRE PIPE, ETC.
MINIMUM OF 1 DETECTORS IN WORK AREA
MINIMUM OF 2 DETECTORS IN EACH PLENUM AND DUCT AREA.

FUSIBLE LINK LINE LIMITATIONS WHEN USED WITH
MODEL MCH3 AND MCH3 CONTROL HEADS AND PART NO.
415670 AND 423250 PULLEY ELBOWS.
MAXIMUM # OF DETECTORS: 20
MAXIMUM LENGTH OF CABLE: 150 FEET
MAXIMUM # OF PULLEYS: 40

MODEL RPS-M CABLE RUN LIMITATIONS WHEN USED WITH
MODEL MCH3, ECH3, AND MCH3 CONTROL HEADS AND
PART NO. 415670 AND 423250 PULLEY ELBOWS.
MAXIMUM LENGTH OF CABLE: 150 FEET
MAXIMUM # OF PULLEYS: 40 FEET

LEGEND
 _____ SYSTEM PIPING
 - - - - - HIDDEN PIPING
 - . - . - ACTUATION LINE
 (X) NOZZLE IDENTIFIER
 (F) FUSIBLE LINK (FL)
 XXX

(NOTE: HEAT DETECTOR LAYOUTS ARE
CONCEPTUAL. DETECTOR TYPE AND
PLACEMENT ARE THE RESPONSIBILITY
OF THE INSTALLING CONTRACTOR.)

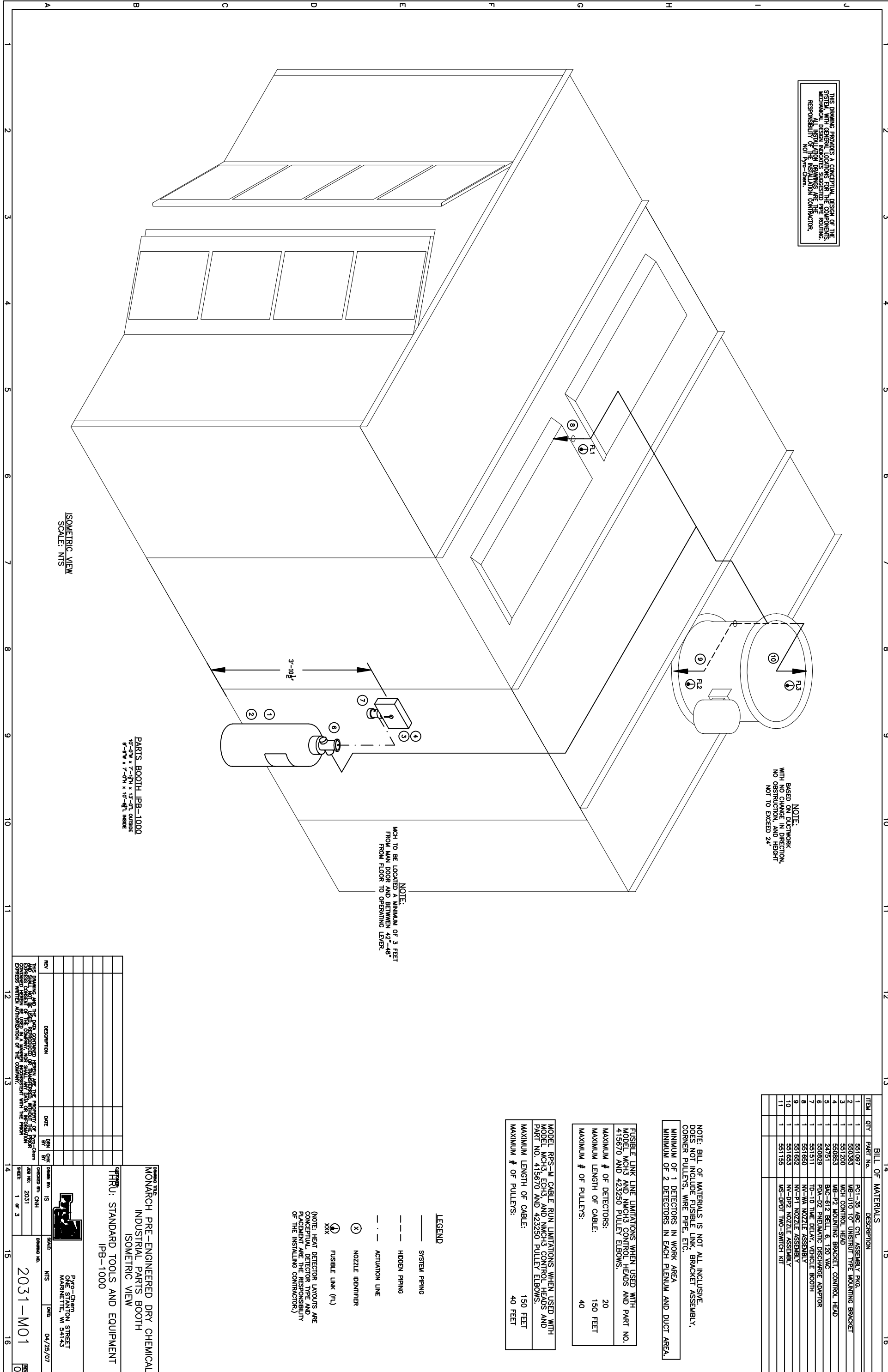
DRAWING TITLE
**MONARCH PRE-ENGINEERED DRY CHEMICAL
 INDUSTRIAL PARTS BOOTH
 ISOMETRIC VIEW**

THRU: STANDARD TOOLS AND EQUIPMENT
 IPB-1000

DATE: 04/25/07
 DRAWN BY: IS
 CHECKED BY: CHM
 JOB NO: 2031
 SHEET: 1 OF 3

PYS-CHEM
 ONE STANTON STREET
 MANWATER, WI 53143

ISOMETRIC VIEW
 SCALE: NTS



REV	DESCRIPTION	DATE	BY	CHK

THIS DRAWING AND THE DATA CONTAINED HEREIN ARE THE PROPERTY OF PYS-CHEM. NO PART OF THIS DRAWING OR DATA MAY BE REPRODUCED OR TRANSMITTED IN ANY FORM OR BY ANY MEANS, ELECTRONIC OR MECHANICAL, WITHOUT PERMISSION IN WRITING FROM PYS-CHEM.

2031-M01