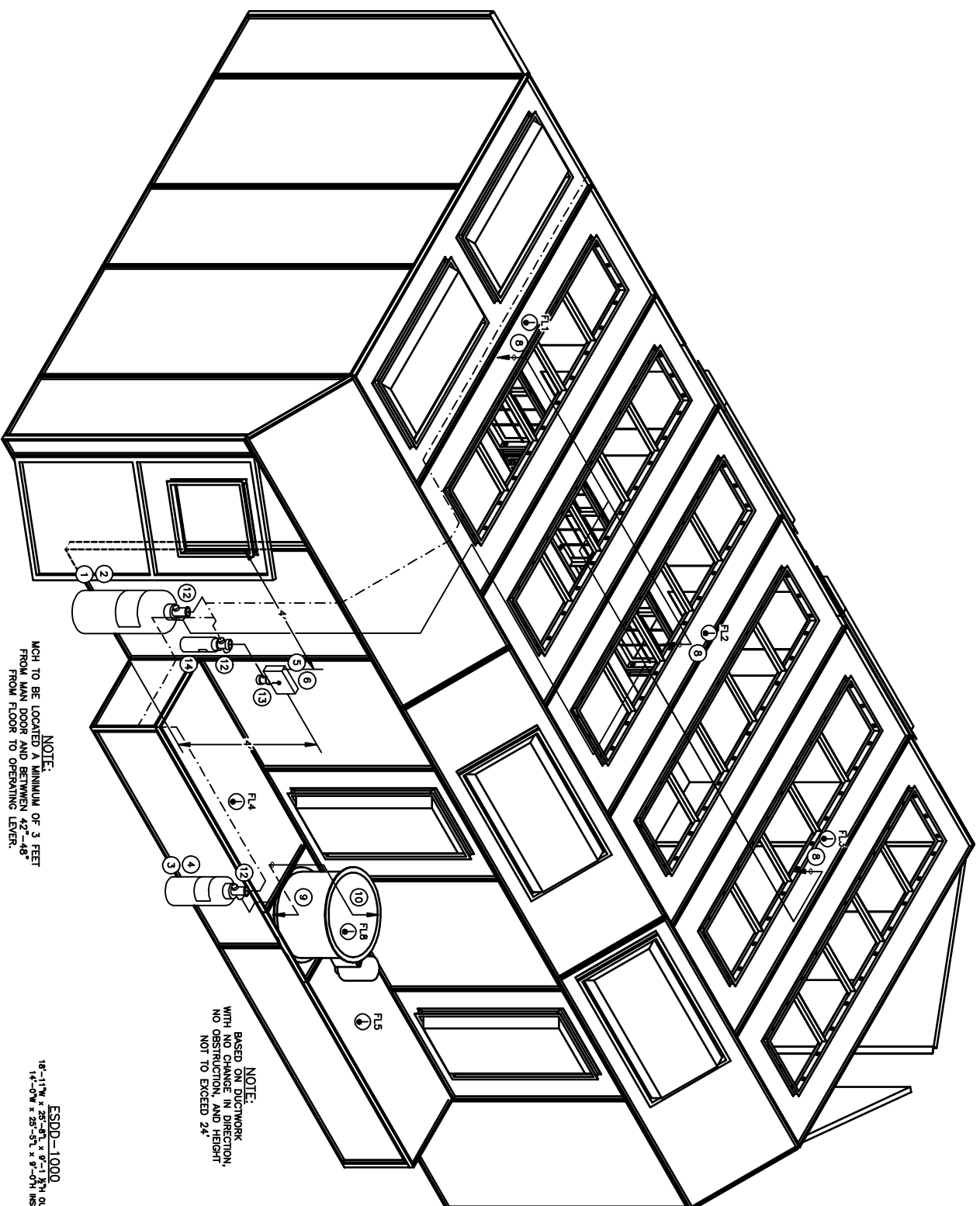


THIS DRAWING PROVIDES A CONCEPTUAL DESIGN OF THE SYSTEM WITH GENERAL LOCATIONS FOR THE COMPONENTS. RESPONSIBILITY FOR GENERAL CONCEPTUAL DESIGN, RESPONSIBILITY FOR THE INSTALLATION CONTRACTOR, NOT THE DESIGNER.



NOTE:
MCH TO BE LOCATED A MINIMUM OF 3 FEET FROM FLOOR TO OPENING LETTER.

NOTE:
BASED ON DUCTWORK WITH NO CHANGE IN DIRECTION, NOT TO EXCEED 24"

ESDD-1000
18'-11" x 25'-8 1/2" x 9'-1 3/4" OUTSIDE
14'-0" x 25'-5 1/2" x 9'-0 1/4" INSIDE

ISOMETRIC VIEW
SCALE: NTS

ITEM	QTY	PART No.	DESCRIPTION
1	1	551094	PG-70 ABC CTL ASSEMBLY PKG.
2	1	550638	MB-U12 12" UNISTRUT TYPE MOUNTING BRACKET
3	2	551694	PG-17 ABC CTL ASSEMBLY PKG.
4	2	550524	MB-U8 8" UNISTRUT TYPE MOUNTING BRACKET
5	1	551200	MCH CONTROL HEAD
6	1	550653	MB-F2 MOUNTING BRACKET, CONTROL HEAD
7	1	47151	BRG-612 5/8" x 20 W/C
8	3	551690	WV-WA NOZZLE ASSEMBLY
9	2	551692	WV-DZ NOZZLE ASSEMBLY
10	2	551693	WV-DZ2 NOZZLE ASSEMBLY
11	1	551035	MS-DPO PNEUMATIC SWITCH KIT
12	1	550829	PA-DZ PNEUMATIC DISCHARGE ADAPTOR
13	1	551011	TD-10 TIME DELAY, VEHICLE BOOTH
14	1	550104	PAE-10 PNEUMATIC ACTUATING CYLINDER

NOTE: BILL OF MATERIALS IS NOT ALL INCLUSIVE. DOES NOT INCLUDE FUSIBLE LINK, BRACKET ASSEMBLY, CORNER PULLEYS, WIRE PIPE, ETC.

SHEET ONE DETECTOR PLACEMENT
MINIMUM OF 3 DETECTORS IN WORK AREA
MINIMUM OF 2 DETECTORS IN PLENUM AREA
MINIMUM OF 1 DETECTOR IN DUCT AREA.

FUSIBLE LINK LINE LIMITATIONS WHEN USED WITH MODEL MCH3 AND MCH3 CONTROL HEADS AND PART NO. 415670 AND 423250 PULLEY ELBOWS:
MAXIMUM # OF DETECTORS: 20
MAXIMUM LENGTH OF CABLE: 150 FEET
MAXIMUM # OF PULLEYS: 40

MODEL RPS-M CABLE RUN LIMITATIONS WHEN USED WITH MODEL MCH3, ECH3, AND MCH3 CONTROL HEADS AND PART NO. 415670 AND 423250 PULLEY ELBOWS:
MAXIMUM LENGTH OF CABLE: 150 FEET
MAXIMUM # OF PULLEYS: 40 FEET

LEGEND

- SYSTEM PIPING
- - - HIDDEN PIPING
- · - · - ACTUATION PIPING
- ⊗ BILL OF MATERIAL ITEM NUMBER
- ⊙ FUSIBLE LINK (FL)
- XXX

(NOTE: HEAT DETECTOR LAYOUTS ARE CONCEPTUAL. DETECTOR TYPE AND PLACEMENT ARE THE RESPONSIBILITY OF THE INSTALLING CONTRACTOR.)

REV	DESCRIPTION	DATE	BY	CHK

MONARCH PRE-ENGINEERED DRY CHEMICAL VEHICLE PAINT BOOTH ISOMETRIC VIEW
THRU: STANDARD TOOLS AND EQUIPMENT
ESDD-1000

DATE: 08/07/07
DRAWN BY: IS
CHECKED BY: CHM
DATE: 08/07/07
SCALE: NTS
SHEET: 1 of 4

P/O: Chem
ONE STANTON STREET
MANNINGVILLE, WI 54143
2079-M01