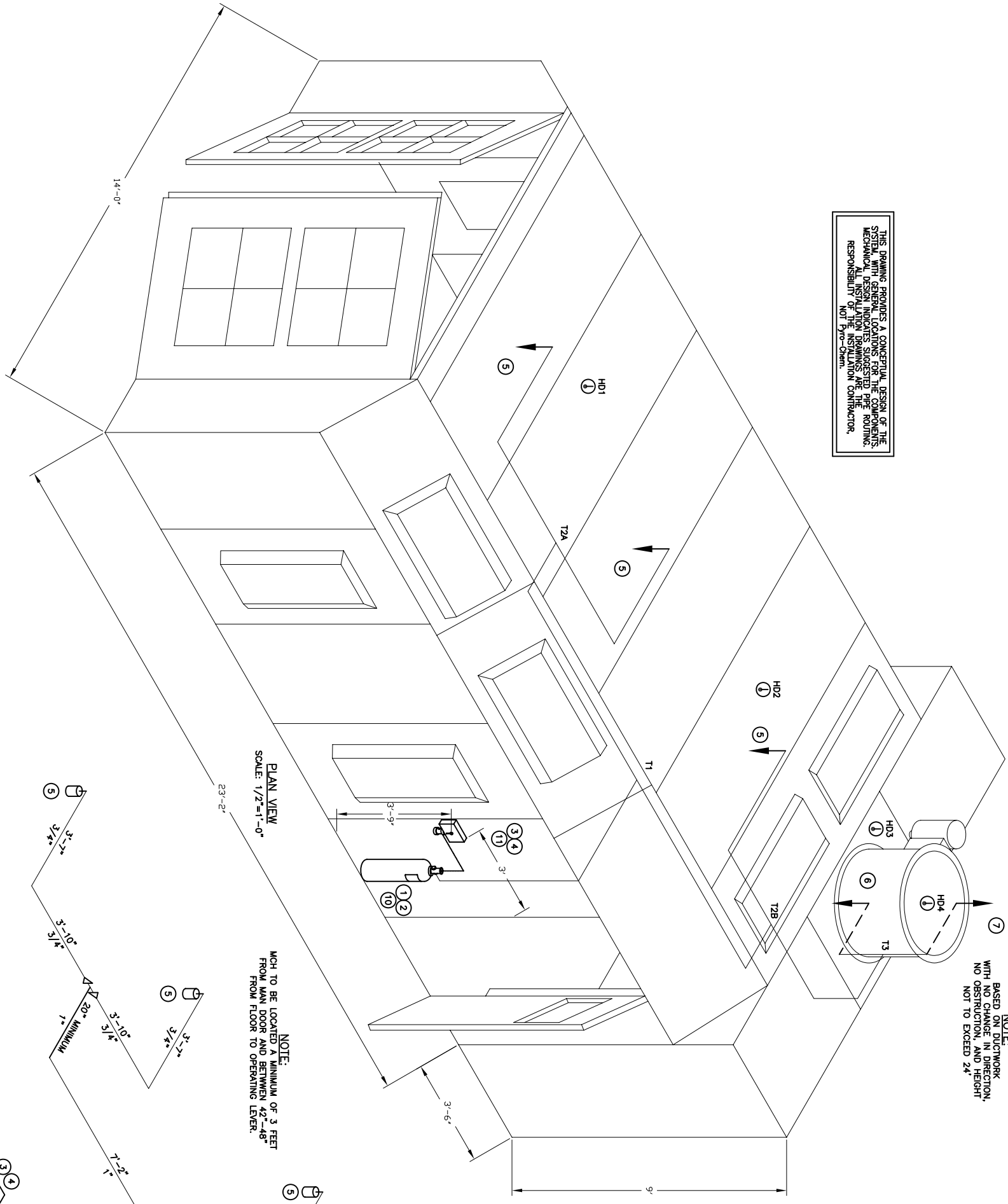


THIS DRAWING PROVIDES A CONCEPTUAL DESIGN OF THE SYSTEM WITH GENERAL LOCATIONS FOR THE COMPONENTS. MECHANICAL DESIGN INDICATES SUGGESTED PIPE ROUTING. ALL INSTALLATION DRAWINGS ARE THE RESPONSIBILITY OF THE INSTALLATION CONTRACTOR, NOT Pro-Chem.

NOTE: BASED ON DUCTWORK WITH NO CHANGE IN DIRECTION, NO OBSTRUCTION, AND HEIGHT NOT TO EXCEED 24'

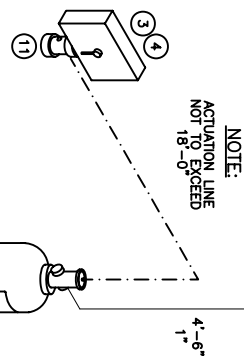


PLAN VIEW  
SCALE: 1/2"=1'-0"

NOTE: MCH TO BE LOCATED A MINIMUM OF 3 FEET FROM MAIN DOOR AND BETWEEN 42"-48" FROM FLOOR TO OPERATING LEVER.

\* CAUTION \*  
THIS ISOMETRIC REPRESENTATION IS SCHEMATIC IN NATURE AND IS NOT TO BE USED FOR CONSTRUCTION OR PIPE FABRICATION PURPOSES. THE INSTALLATION CONTRACTOR IS RESPONSIBLE FOR VERIFICATION OF EXACT ROUTING AND PIPE LENGTHS IN THE FIELD.

PIPING ISOMETRIC  
SCALE: NTS



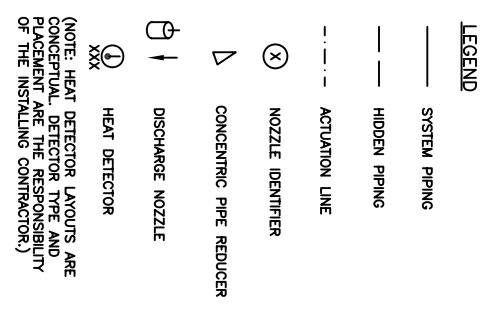
NOTE: ACTUATION LINE NOT TO EXCEED 18'-0"

ITEM	QTY	PART No.	DESCRIPTION
1	1	551194	PG-170 ARG CTL ASSEMBLY PKG.
2	1	350638	MB-U12 12 INSTRUT TPE MOUNTING BRACKET
3	1	351200	MCH CONTROL HEAD
4	1	350853	MTG BRACKET, CONTROL HEAD
5	3	551650	NV-WA NOZZLE ASSEMBLY
6	1	551652	NV-P1 NOZZLE ASSEMBLY
7	1	551653	NV-DP2 NOZZLE ASSEMBLY
8	1	24751	BAC-612 BELL, 6, 120 VAC
9	1	550829	PDA-DZ PNEUMATIC ACTUATION
10	1	551511	PC VEHICLE BOOTH TIME DELAY
11	1	551511	PC VEHICLE BOOTH TIME DELAY

NOTE: BILL OF MATERIALS IS NOT ALL INCLUSIVE. DOES NOT INCLUDE FUSIBLE LINK, BRACKET ASSEMBLY, CORNER PULLEYS, WIRE PIPE, ETC.  
MINIMUM OF 2 DETECTORS IN WORK AREA  
MINIMUM OF 2 DETECTORS IN PLENUM AND DUCT AREA.

FUSIBLE LINK LINE LIMITATIONS WHEN USED WITH MODEL MCH3 AND NMCH3 CONTROL HEADS AND PART NO. 415670 AND 423250 PULLEY ELBOWS.  
MAXIMUM # OF DETECTORS: 20  
MAXIMUM LENGTH OF CABLE: 150 FEET  
MAXIMUM # OF PULLEYS: 40

MODEL RPS-M CABLE RUN LIMITATIONS WHEN USED WITH MODEL MCH3, ECH3, AND NMCH3 CONTROL HEADS AND PART NO. 415670 AND 423250 PULLEY ELBOWS.  
MAXIMUM LENGTH OF CABLE: 150 FEET  
MAXIMUM # OF PULLEYS: 40 FEET



(NOTE: HEAT DETECTOR LAYOUTS ARE CONCEPTUAL. DETECTOR TYPE AND PLACEMENT ARE THE RESPONSIBILITY OF THE INSTALLING CONTRACTOR.)

DRAWING TITLE:  
MONARCH PRE-ENGINEERED DRY CHEMICAL VEHICLE PAINT BOOTH  
PLAN, ELEVATION, ISOMETRIC VIEWS

THRU: STANDARD TOOLS AND EQUIPMENT  
CROSSFLOW-1000

REV	DESCRIPTION	DATE	DRN	CHK	BY
3	BILL OF MATERIAL, BOOTH LENGTH	10/2/06	CNH	SL	
2	MCH DIMENSIONS	9/11/06	CNH	SL	
1	MCH NOTES	9/08/06	CNH	SL	

THIS DRAWING AND THE DATA CONTAINED HEREIN ARE THE PROPERTY OF PRO-CHEM. EXPRESS OR IMPLIED WARRANTIES, INCLUDING BUT NOT LIMITED TO, ACCURACY AND COMPLETENESS OF THE INFORMATION CONTAINED HEREIN ARE HEREBY DISCLAIMED. THE USER SHALL ACCEPT FULL RESPONSIBILITY FOR THE PROPER USE OF THE INFORMATION CONTAINED HEREIN. THE COMPANY ASSUMES NO LIABILITY FOR ANY DAMAGE OR LOSS OF PROFITS, BUSINESS, OR REPUTATION, OR FOR ANY SPECIAL, INCIDENTAL, OR CONSEQUENTIAL DAMAGES, WHETHER WRITTEN OR UNWRITTEN, ARISING FROM THE USE OF THE INFORMATION CONTAINED HEREIN.

Pro-Chem  
ONE STANTON STREET  
MARRINETTE, WI 54143

DRAWING NO. 1812  
SHEET 1 OF 2

DATE: 8/28/06

1812-M01