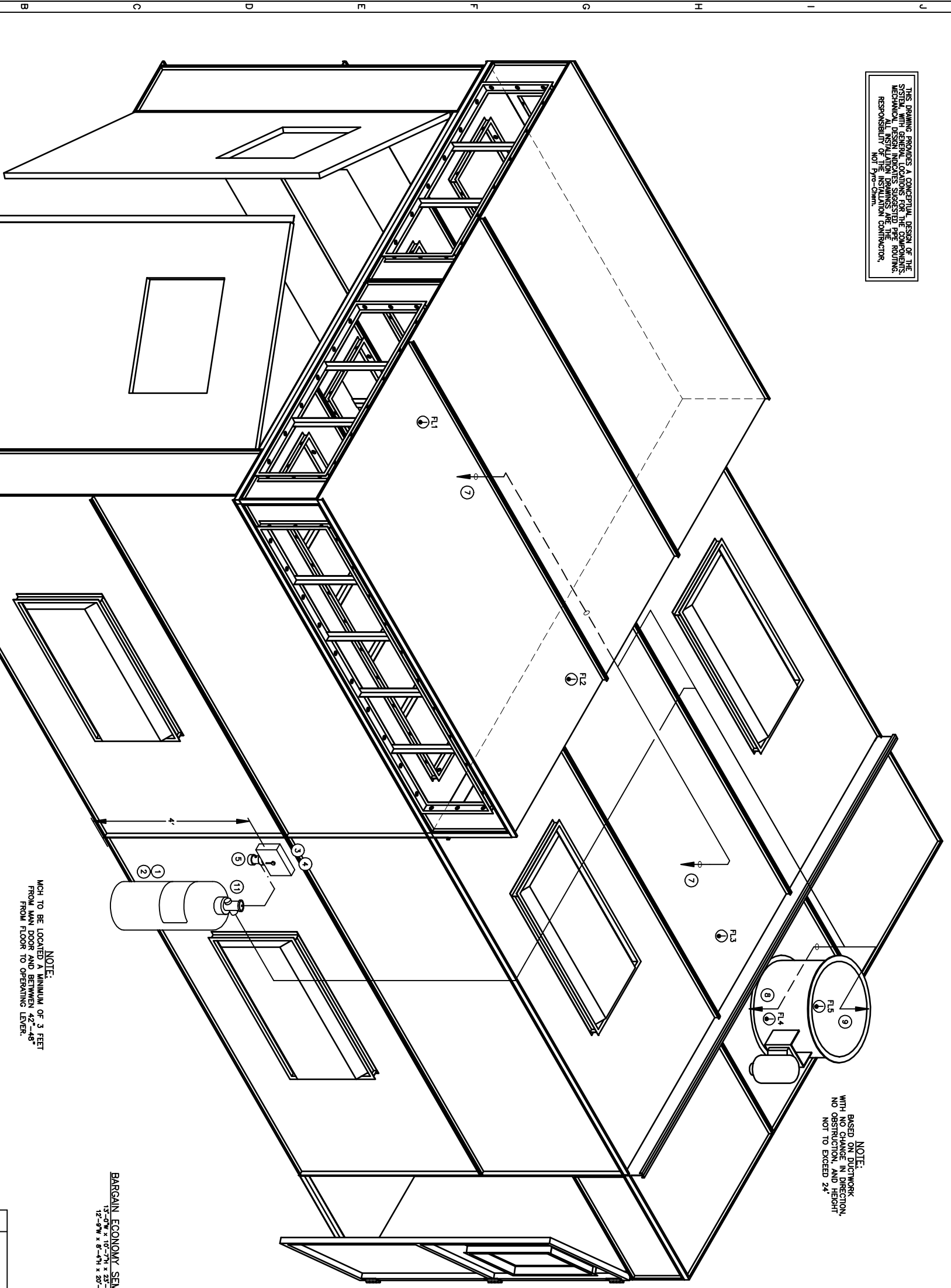


THIS DRAWING PROVIDES A CONCEPTUAL DESIGN OF THE SYSTEM WITH GENERAL CONDITIONS FOR THE COMPONENTS, MECHANICAL DESIGN INDICATES SUGGESTED PIPE ROUTING, MECHANICAL INSTALLATION DRAWINGS ARE THE RESPONSIBILITY OF THE INSTALLING CONTRACTOR, NOT PFC-Chem.

NOTE:  
BASED ON LITWORK  
WITH NO CHANGE IN DIRECTION,  
NO OBSTRUCTION, AND HEIGHT  
NOT TO EXCEED 24'



NOTE:  
MCH TO BE LOCATED A MINIMUM OF 3 FEET  
FROM MAIN DOOR AND BETWEEN 42"-48"  
FROM FLOOR TO OPERATING LEVEL.

BARGAIN ECONOMY SEMIDOWN DRAFT  
12'-0" W x 8'-0" H x 20'-0" INSIDE

ITEM	QTY	PART No.	DESCRIPTION
1	1	551094	PG-70 ABC CIL ASSEMBLY Pkg.
2	1	550638	MB-U12 12" UNSHIRT TUBE MOUNTING BRACKET
3	1	551200	MCH CONTROL HEAD
4	1	550883	MB-P2 MOUNTING BRACKET, CONTROL HEAD
5	1	551511	10-10 TIME DELAY, VEHICLE BOOTH
6	1	247510	BAC-612 BELT, 6, 120 VAC
7	2	551690	IN-PA NOZZLE ASSEMBLY
8	1	551692	IN-P1 NOZZLE ASSEMBLY
9	1	551693	IN-DP2 NOZZLE ASSEMBLY
10	1	551153	MS-DP1 TWO SWITCH KIT
11	1	550629	PM-02 PNEUMATIC DISCHARGE ADAPTOR
12			
13			

NOTE: BILL OF MATERIALS IS NOT ALL INCLUSIVE.  
DOES NOT INCLUDE FUSIBLE LINK, BRACKET ASSEMBLY,  
CORNER PULLEYS, WIRE PIPE, ETC.  
MINIMUM OF 3 DETECTORS IN WORK AREA  
MINIMUM OF 2 DETECTORS IN EACH PLENUM AND DUCT AREA.


FUSIBLE LINK LINE LIMITATIONS WHEN USED WITH  
MODEL MCH3 AND NMCH3 CONTROL HEADS AND PART NO.  
415670 AND 423250 PULLEY ELBOWS:  
MAXIMUM # OF DETECTORS: 20  
MAXIMUM LENGTH OF CABLE: 150 FEET  
MAXIMUM # OF PULLEYS: 40

MODEL RPS-M CABLE RUN LIMITATIONS WHEN USED WITH  
MODEL MCH3, ECH3, AND NMCH3 CONTROL HEADS AND  
PART NO. 415670 AND 423250 PULLEY ELBOWS:  
MAXIMUM LENGTH OF CABLE: 150 FEET  
MAXIMUM # OF PULLEYS: 40 FEET

LEGEND  
 — SYSTEM PIPING  
 - - - HIDDEN PIPING  
 - - - ACTUATION PIPING  
 (X) BILL OF MATERIAL ITEM NUMBER  
 (F1) FUSIBLE LINK (F1)  
 XXX (NOTE: HEAT DETECTOR LAYOUTS ARE CONCEPTUAL. DETECTOR TYPE AND PLACEMENT ARE THE RESPONSIBILITY OF THE INSTALLING CONTRACTOR.)

DRAWING TITLE:  
MONARCH PRE-ENGINEERED DRY CHEMICAL  
VEHICLE PAINT BOOTH  
ISOMETRIC VIEW  
THRU: STANDARD TOOLS AND EQUIPMENT  
BESD-1000

REV	DESCRIPTION	DATE	BY	CHK

  
 PFC-Chem  
 ONE STANTON STREET  
 MAINTENANCE, WI 53143  
 DRAWING NO. 2062-01  
 DATE 05/14/07  
 SHEET 1 OF 3