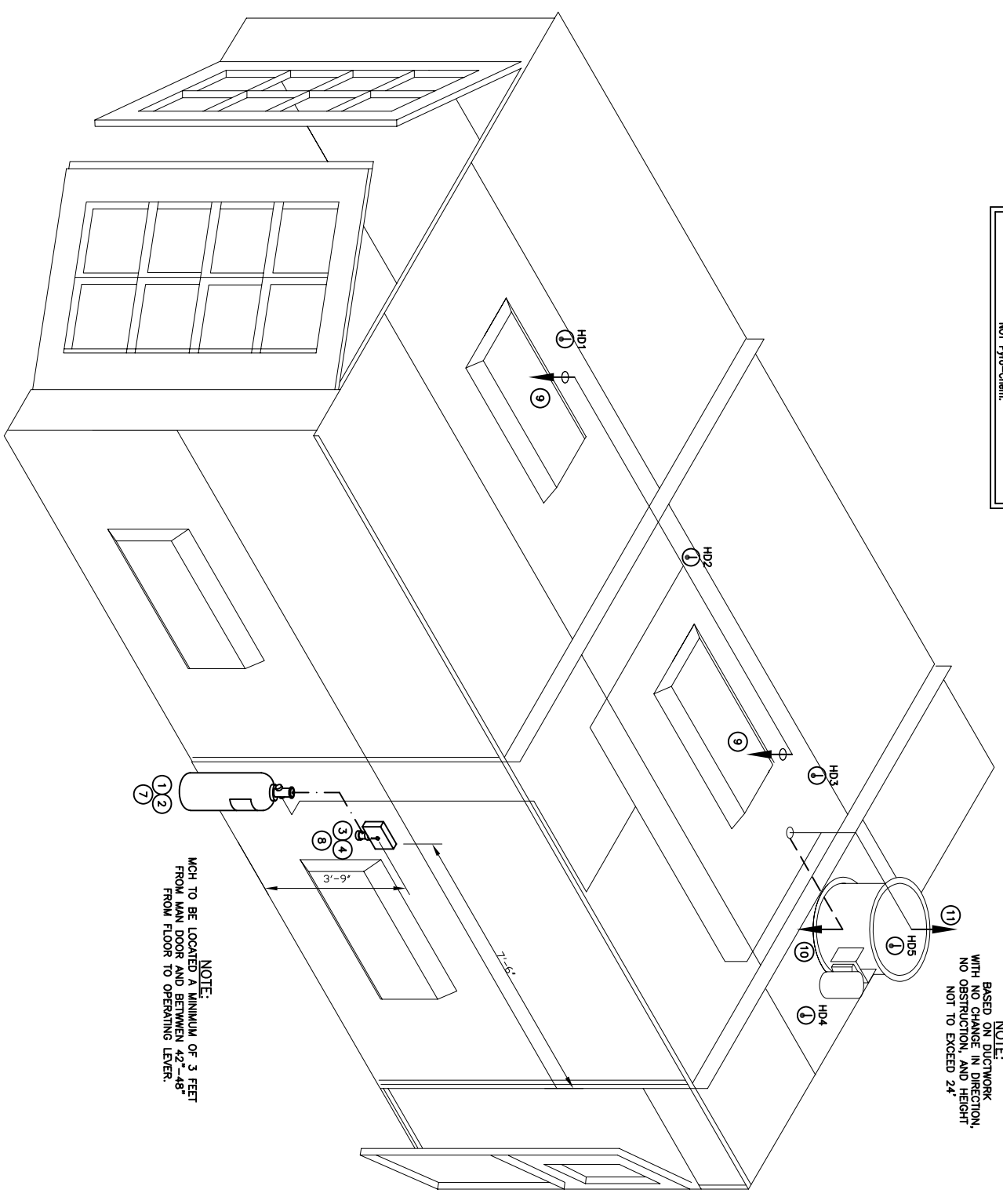


THIS DRAWING PROVIDES A CONCEPTUAL DESIGN OF THE SYSTEM WITH GENERAL LOCATIONS FOR THE COMPONENTS. MECHANICAL INSTALLATION DRAWINGS ARE THE SOLE RESPONSIBILITY OF THE INSTALLATION CONTRACTOR.

NOTE:
BASED ON DUCTWORK WITH NO CHANGE IN DIRECTION, NO OBSTRUCTION, AND HEIGHT NOT TO EXCEED 24'



ISOMETRIC VIEW
SCALE: NTS

BARGAIN ECONOMY CROSS FLOW-1000
13'-0" W x 8'-10" H x 23'-1" L OUTSIDE
12'-0" W x 8'-4" H x 19'-10" L INSIDE

ITEM	QTY	PART No.	DESCRIPTION
1	1	551194	PG-170 ARG CTL ASSEMBLY PKG.
2	1	350638	MB-U12 1/2 UNISTRUT TYPE MOUNTING BRACKET
3	1	351200	MCH CONTROL HEAD
4	1	350953	MTG BRACKET, CONTROL HEAD
5	1	551135	MS-DPDT TWO-SWITCH KIT
6	1	24751	BAC-612 BELL, 6, 120 VAC
7	1	550829	POA-D2 PNEUMATIC ACTUATION
8	1	551511	PC VEHICLE BOOTH TIME DELAY
9	2	551650	NV-WA NOZZLE ASSEMBLY
10	1	551652	NV-P1 NOZZLE ASSEMBLY
11	1	551653	NV-DP2 NOZZLE ASSEMBLY

NOTE: BILL OF MATERIALS IS NOT ALL INCLUSIVE. DOES NOT INCLUDE FUSIBLE LINK, BRACKET ASSEMBLY, CORNER PULLEYS, WIRE PIPE, ETC.
MINIMUM OF 3 DETECTORS IN WORK AREA
MINIMUM OF 2 DETECTORS IN EACH PLENUM AND DUCT AREA.

FUSIBLE LINK LINE LIMITATIONS WHEN USED WITH MODEL MCH3 AND NMCH3 CONTROL HEADS AND PART NO. 415670 AND 423250 PULLEY ELBOWS.
MAXIMUM # OF DETECTORS: 20
MAXIMUM LENGTH OF CABLE: 150 FEET
MAXIMUM # OF PULLEYS: 40

MODEL RPS-M CABLE RUN LIMITATIONS WHEN USED WITH MODEL MCH3, ECH3, AND NMCH3 CONTROL HEADS AND PART NO. 415670 AND 423250 PULLEY ELBOWS.
MAXIMUM LENGTH OF CABLE: 150 FEET
MAXIMUM # OF PULLEYS: 40 FEET

- LEGEND
- SYSTEM PIPING
 - HIDDEN PIPING
 - - - - ACTUATION LINE
 - ⊗ NOZZLE IDENTIFIER
 - ∇ CONCENTRIC PIPE REDUCER
 - ⬇ DISCHARGE NOZZLE
 - Ⓢ HEAT DETECTOR
- (NOTE: HEAT DETECTOR LAYOUTS ARE CONCEPTUAL. DETECTOR TYPE AND PLACEMENT ARE THE RESPONSIBILITY OF THE INSTALLING CONTRACTOR.)

DRAWING TITLE:
MONARCH PRE-ENGINEERED DRY CHEMICAL VEHICLE PAINT BOOTH ISOMETRIC VIEW

THRU: STANDARD TOOLS AND EQUIPMENT
BARGAIN ECONOMY CROSS FLOW-1000

Pro-Chem
ONE STANTON STREET
MARINETTE, WI 54143

REV	DESCRIPTION	DATE	DRN	CHK

THIS DRAWING AND THE DATA CONTAINED HEREIN ARE THE PROPERTY OF PRO-CHEM. EXPRESS CONSENT OF THE COMPANY FOR SALE AND DATA OF THE DRAWING IS NOT TO BE REPRODUCED OR TRANSMITTED IN ANY FORM OR BY ANY MEANS WITHOUT THE WRITTEN AUTHORIZATION OF THE COMPANY.

DRAWING NO. 1992
SHEET: 1 OF 3

DATE: 3/29/07

1992-M01